



Reconstruction of **Winona Drive**

Town of Whitechurch–Stouffville

Virtual Public Information Centre

EXP Services Inc.
Transportation Division

Presented By
**Nick Verdon &
Cameron Rickert**

Wednesday,
November 6, 2024



Welcome!

Welcome to this virtual Public Information Centre.

To help us keep you informed throughout this project:

- Review the slides in the presentation.
- Send us your questions using the online comment form, by e-mail, or mail (see slide 12 for information on how to contact us).
- For more information, please visit the Town's webpage at <https://www.cometogetherws.ca/winonarecon>

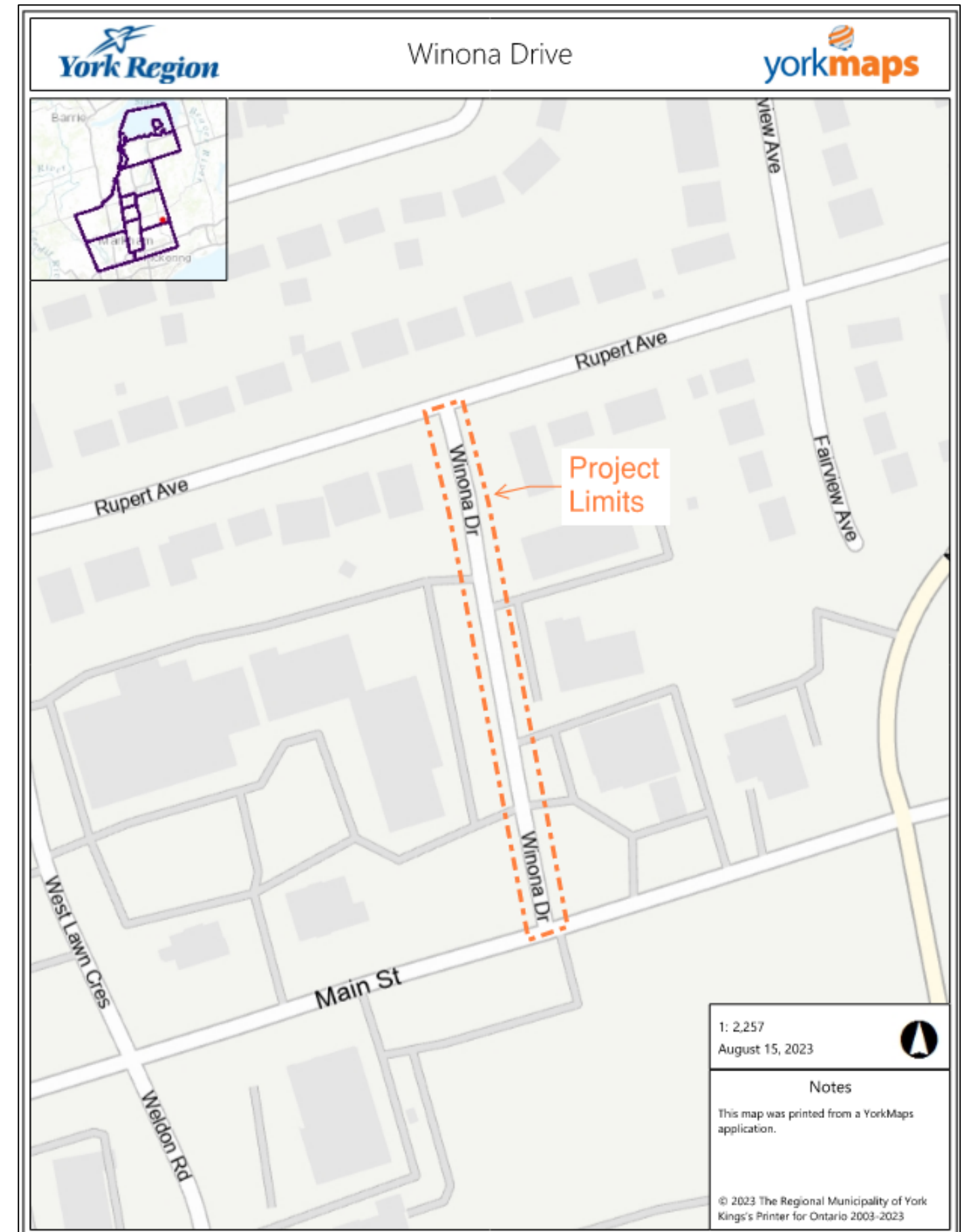


come together
WHITCHURCH-STOUFFVILLE



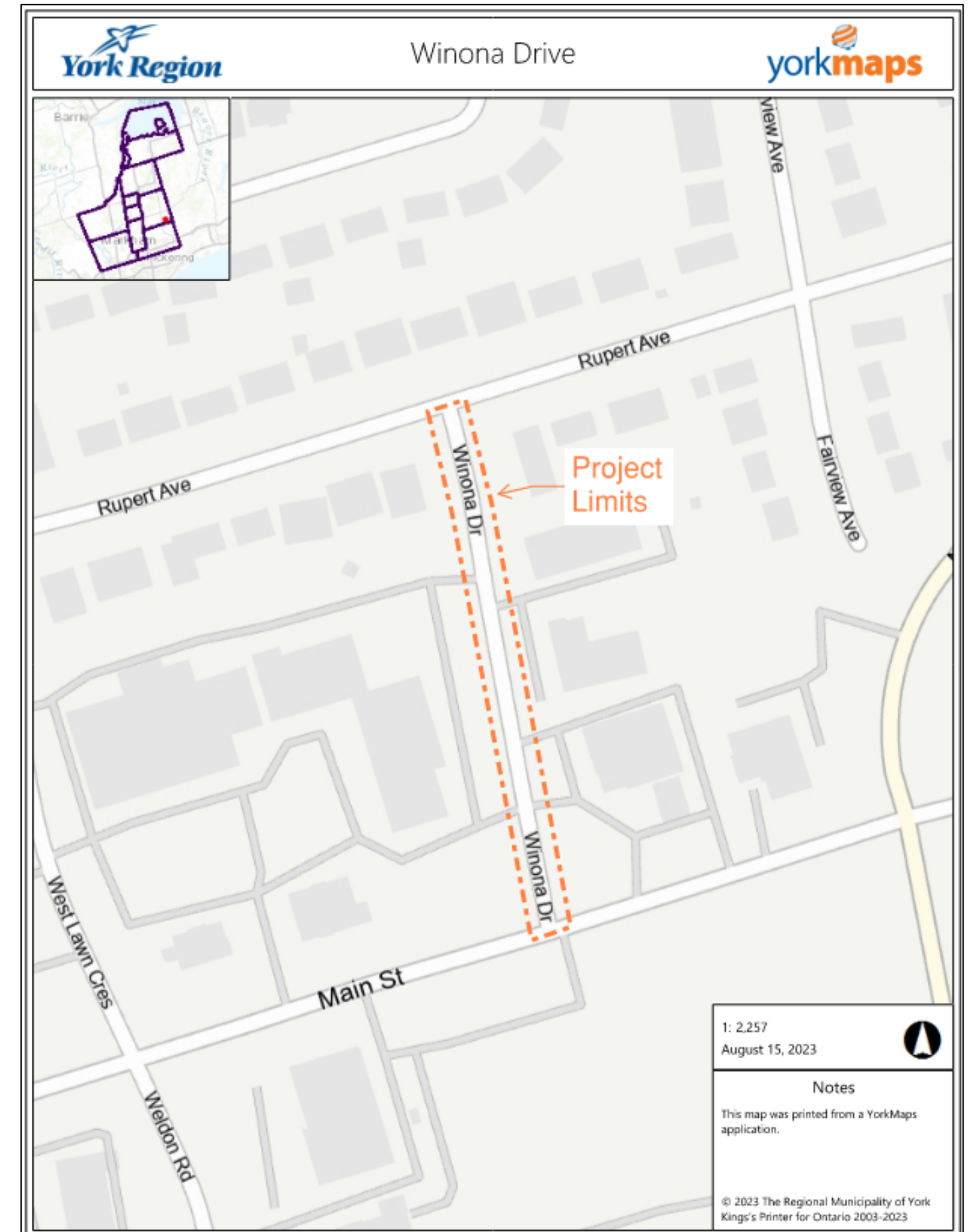
About this Project

- The Reconstruction of Winona Drive within the Community of Stouffville will include the area between Rupert Avenue to the North and Main Street to the south (see figure, right).
- This work is Exempt (previously Schedule A+) from the *Environmental Assessment Act*. Consultation is although a crucial part of this project.
- The Design is anticipated to be completed by the end of 2024, and the tender documents for construction are expected to be completed in early 2025.



What is being done in this project?

- Watermain replacement.
- Sanitary sewer replacement.
- Replacement of service connections up to the property line.
- Reconstruction of the road surface.
- Installation of curbs and gutter.
- Installation of storm sewer.
- Construction of new sidewalk on west side.



Why is the Town doing this Project?

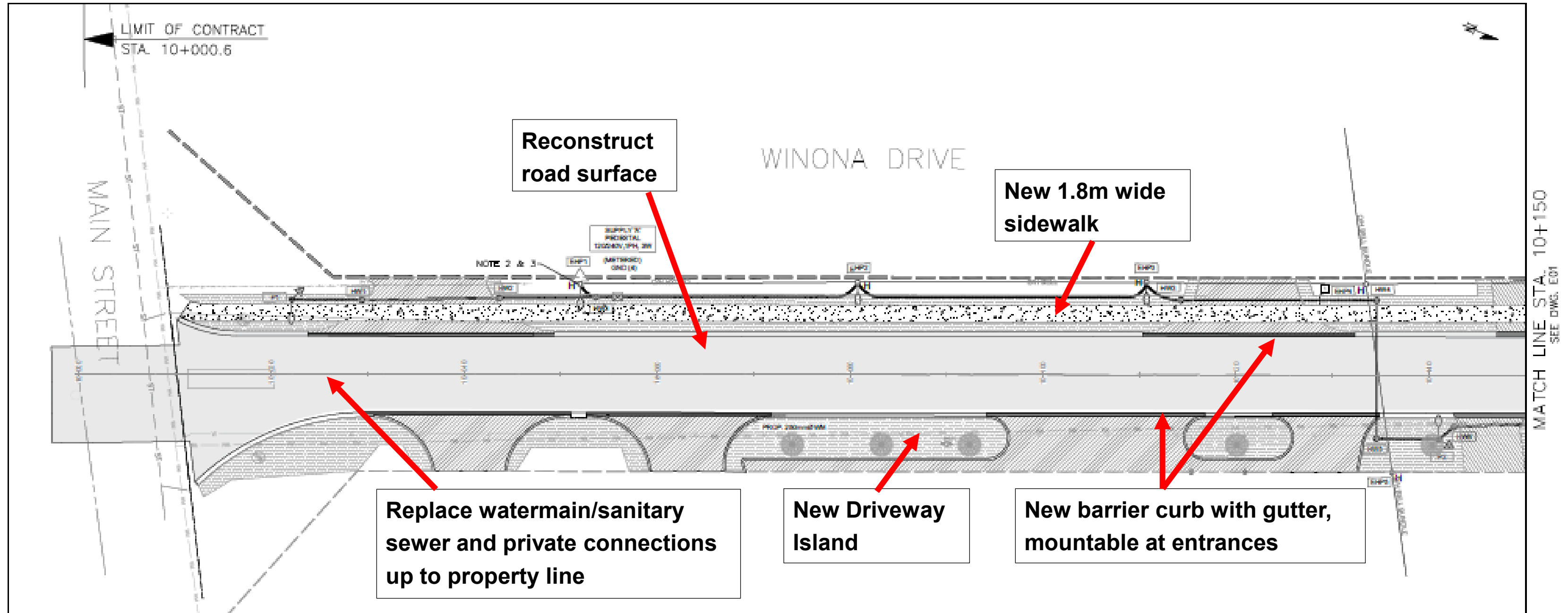
Winona Drive is a two-way local road with a rural cross-section bounded at the north by Rupert Avenue and at the south by Main Street. Partial concrete barrier and mountable curb is found along the eastern perimeter. Outside these areas, granular shoulder and drainage ditches bound the road. There is no existing sidewalk.

The underground utilities (i.e. watermain and sanitary sewer) are aging and in need of repair or replacement. The watermain was built around 1953 using iron cast pipe. The sanitary sewer was built around 1955 using 200mm diameter vitrified clay (VC) pipe.

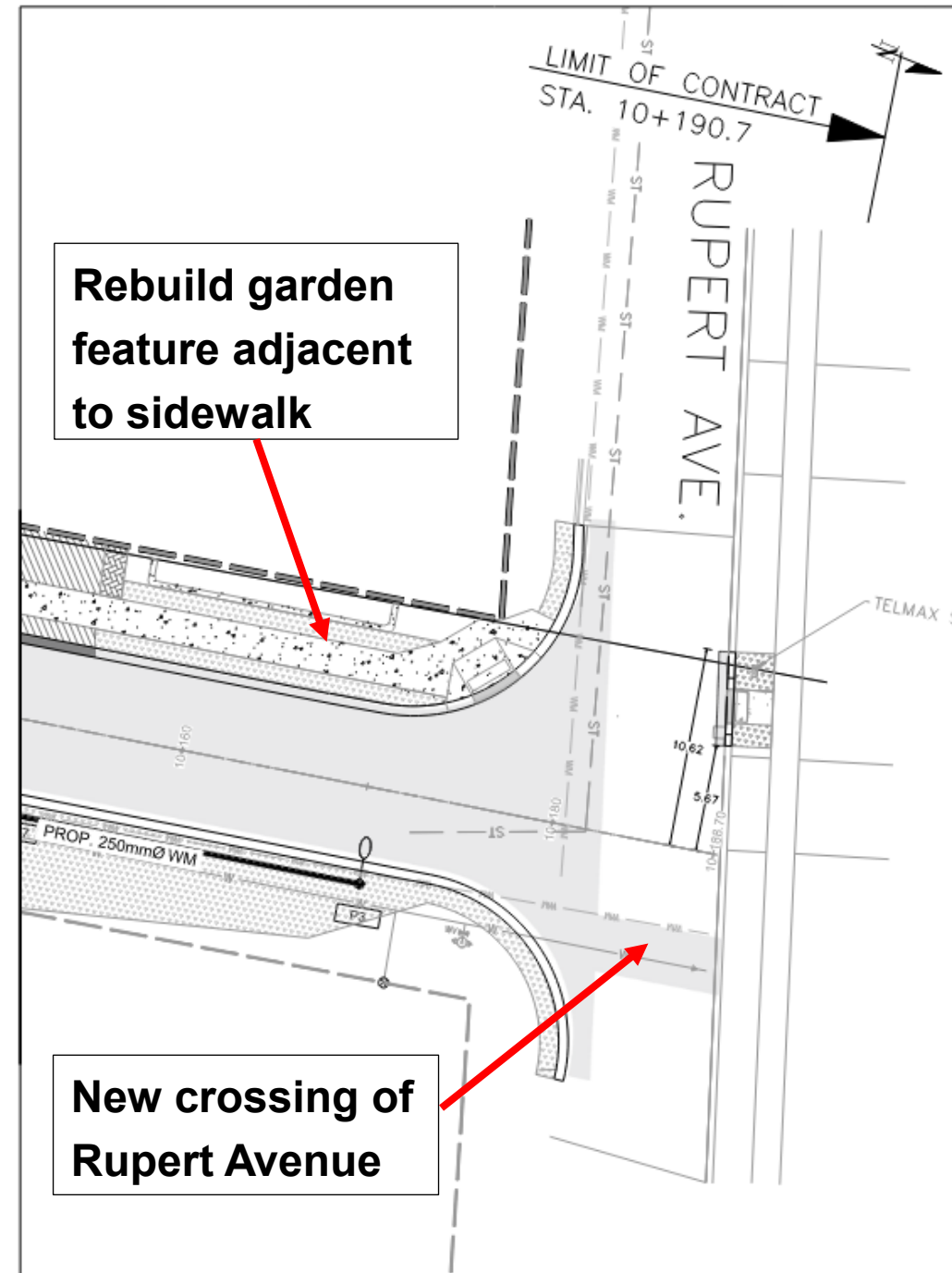
Replacing this aging infrastructure now will avoid future emergency repairs.



Overview of Proposed Construction Activities

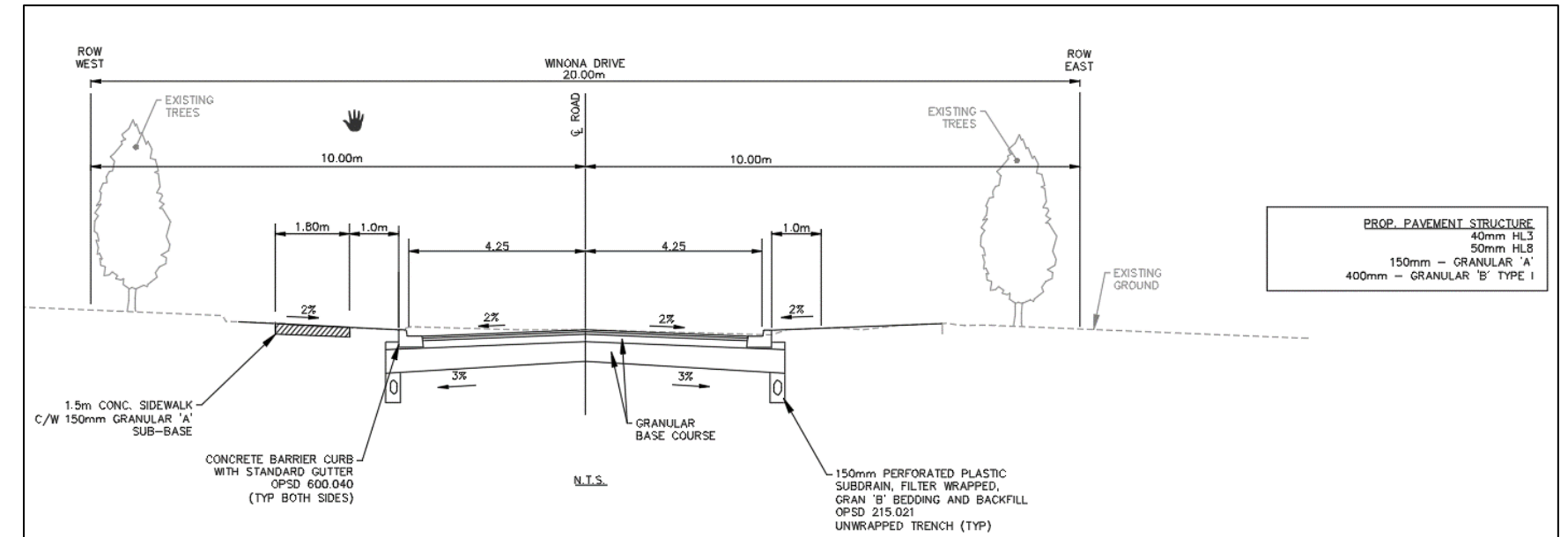


Overview of Proposed Construction Activities (Cont'd)



Proposed Re-construction

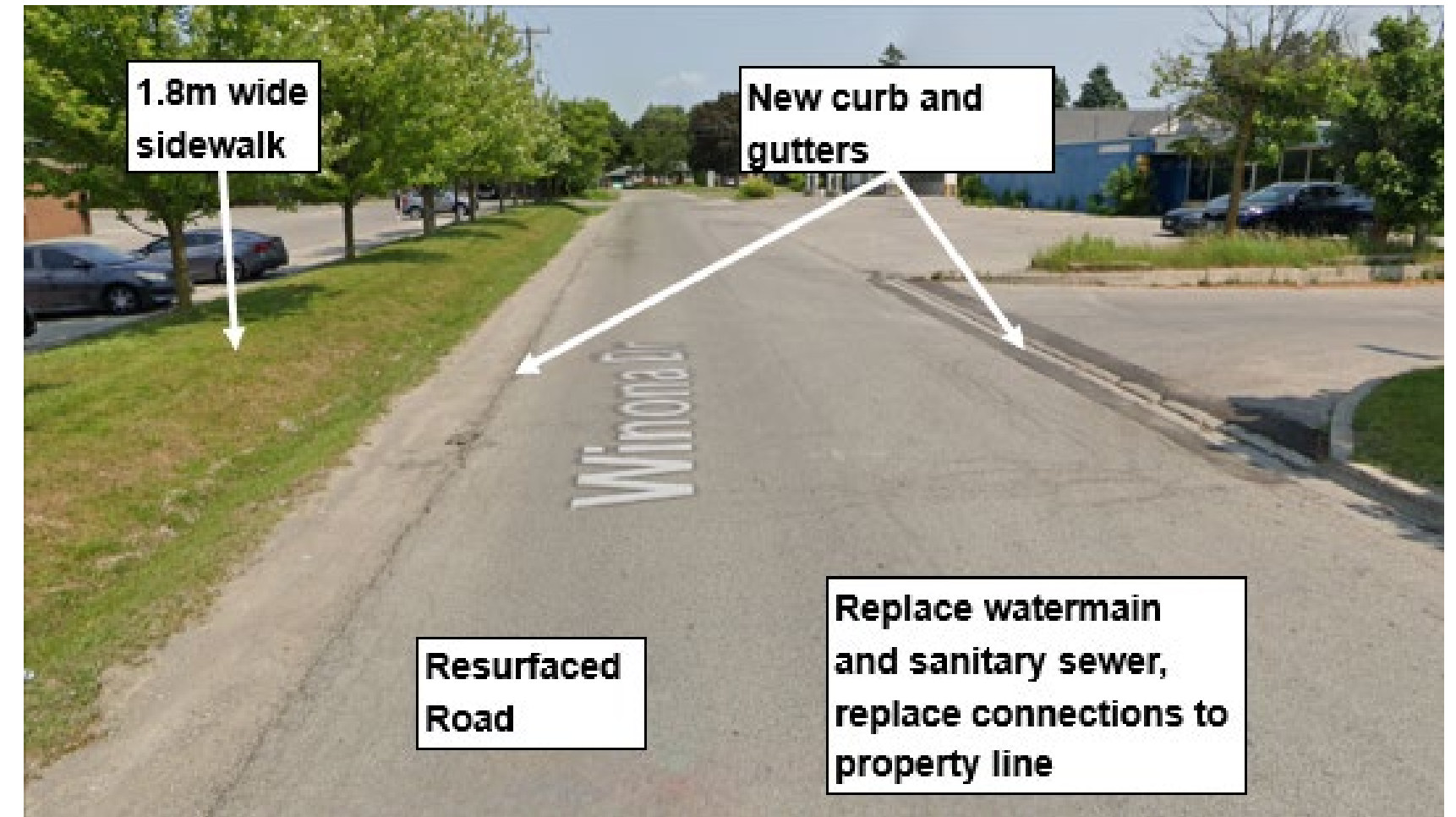
- Winona Drive is approximately 170m in length with a rural cross section. There are two (2) residential properties to the north limit near Rupert Avenue and to the south are commercial entrances.
- The figures on the right provide details on the proposed road reconstruction, which will include a 1.8m wide sidewalk and new standard curb gutters.



Engineering Cross Section (Typical Section)

Field Drains, Downspouts and Sump Pumps

- A field drain system will be installed behind the curb and gutter. On a case-by-case basis, sump pump discharges that would have flow over walkways or driveways may be considered for connection to the field drain system.
- **Please notify the Town** if your property is serviced by sump pump and requires a connection to the field drain system.



Street View with Proposed Reconstruction Activities (looking north)

Construction Management

- Construction is anticipated to occur in 2025, pending budget approval.
- Pre-construction notices will be circulated 2 weeks in advance.
- Driveway crossings and/or closures will be communicated in advance and coordinated with individual homeowners/businesses.
- Emergency access will be maintained at all times.
- Watermain and sewer service disruption will be communicated and coordinated with affected residents.
- Pre-construction condition surveys will be undertaken by the Town, through a consultant in advance of construction activities.
- The contractor will be responsible for dust/mud control.

What do I need to do?

- Residents must ensure that private modifications within the municipal right-of-way are removed prior to construction (i.e. landscaping, irrigation systems, etc.).
- Disconnect all downspouts from underground pipes.
- On a case-by-case basis, sump pump discharges that would result in flows over walkways or driveways may be considered for connection to the field drain system.
- Weekly waste collection services shall be maintained.



Watermain Installation on Burkholder Street

Tree Protection and Anticipated Impacts

- The trees within the project area fall under By-law Number 2014-101-RE. Section 2.0, General Prohibitions (e), states:
“No person, in the performance of any Site Alteration, shall injure or destroy a municipality-owned tree or other tree which is subject to tree protection measures except to the extent that such injury or destruction is specifically authorized in writing in accordance with the provisions of this By-laws of the Corporation or The Regional Municipality of York for the protection of trees.”
- Trees that could potentially be impacted by the road construction in the project area were examined and assessed according to the International Society of Arboriculture Methodology.
- Where required, trees will be protected from construction activities using tree protection hoarding.
- Five (5) trees have been identified as requiring removal due to construction.



Examples of Tree Protection

Trees to be Removed



Location of the five (5) trees that will be removed for site construction.

Traffic / Construction Stage Management

- Winona Drive reconstruction activity is proposed to proceed using a two-stage approach to minimize impact to the surrounding residents.
- Winona drive will be closed to all but emergency and local traffic access during working hours.
- All driveway crossings and/or closures will be communicated in advance and coordinated with individual homeowners.
- Sanitary sewer connection in the Main Street intersection will require lane closures and be completed during night work and over a weekend.
- Access of emergency vehicles to all properties will always be maintained throughout construction.



We Want to Hear From You!

Your feedback is important, so please provide us with your written comments. Here is how you can reach us:

- Visit the project webpage to check on the latest information to fill out an online comment sheet.
- Call or e-mail the Town's Project Lead, Chandra Pyduthalli. His contact information is below.
- Write and mail us a letter. Please write "**Attention: Winona Drive Reconstruction PIC**" on the envelope.

Please send us your comments by November 27, 2024. This will allow us to incorporate any comments that you may have before the final design is complete.

Questions and Comments that require a response will be included in a revised presentation that will be posted to the project during the week of December 11, 2024.



Visit <https://www.cometogetherws.ca/Winonarecon> for project information.

Town Project Contact

Chandra Pyduthalli

Project Manager

Town of Whitchurch-Stouffville

Phone 905-640-1900 ext. 4258

Email Chandra.pyduthalli@townofws.ca

Mail 111 Sandiford Drive

Stouffville, Ontario L4A 0Z8