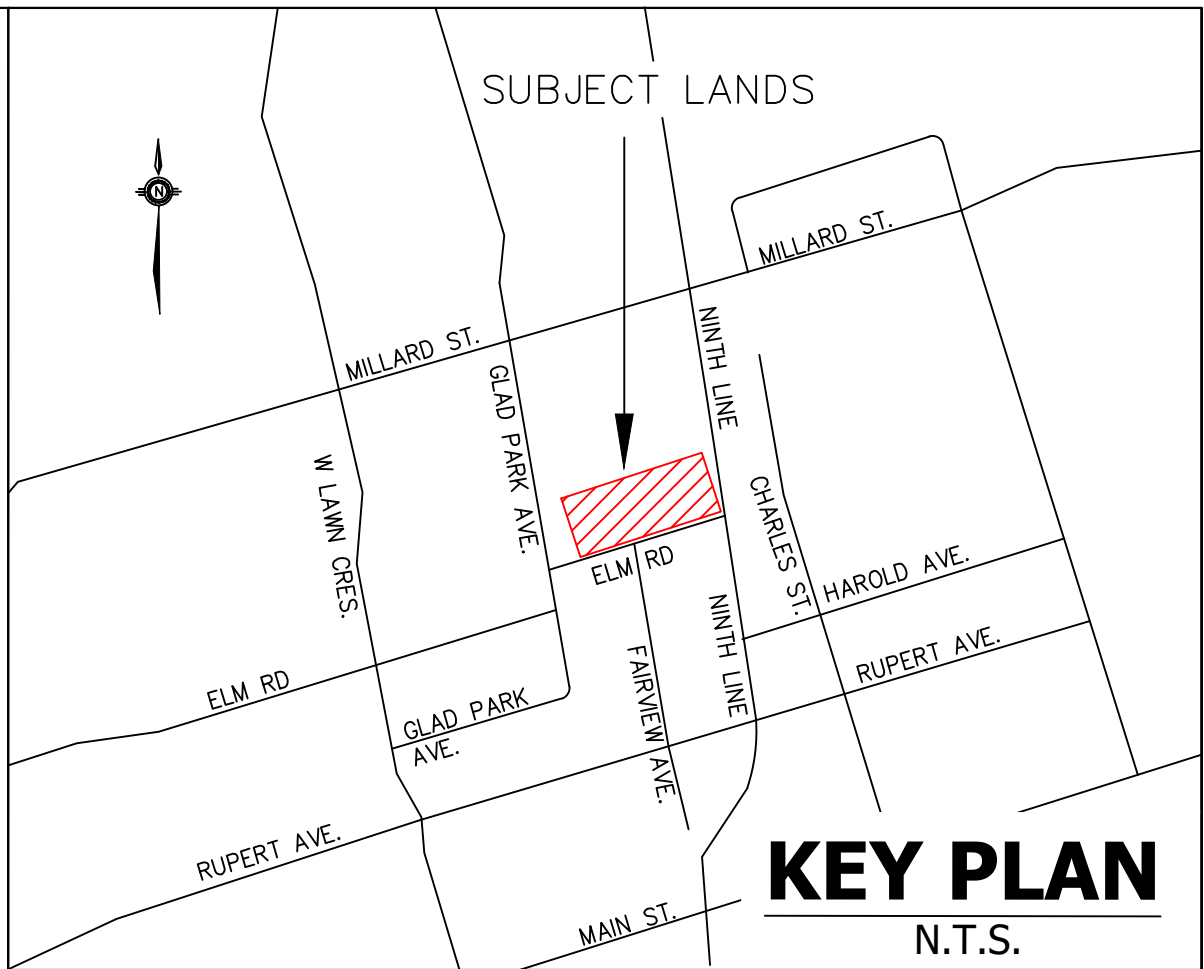
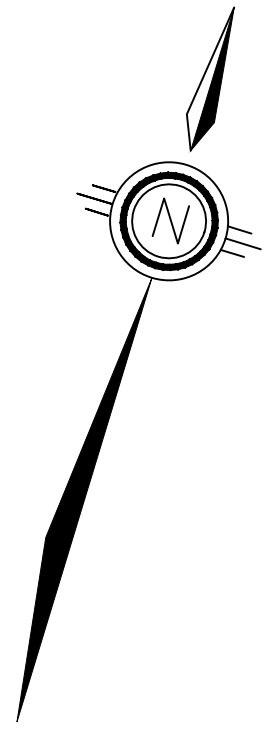
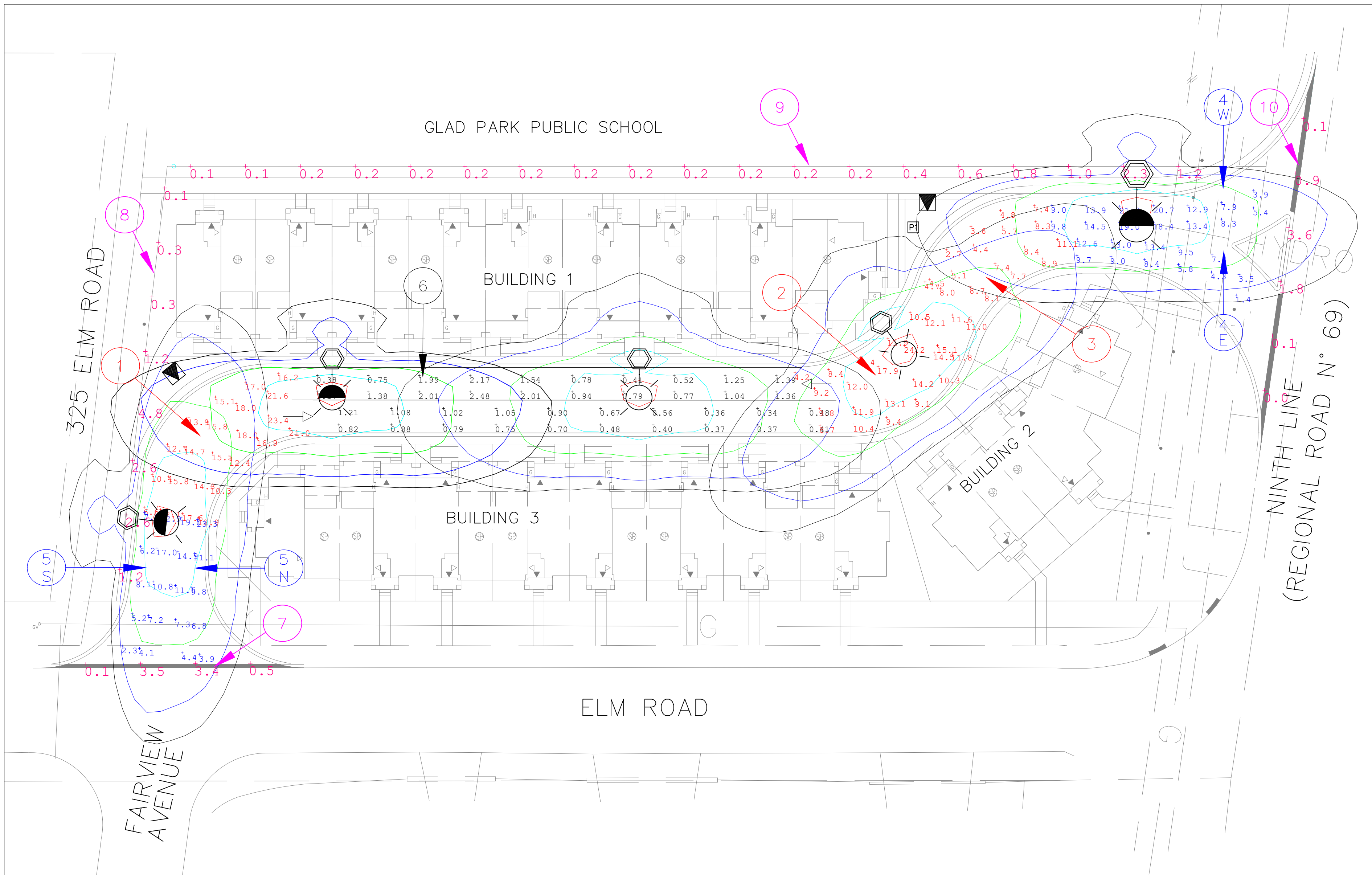


DRAWN BY: S.S	CHECKED BY: M.S	TOWN ID:	DRAWING NO.
DESIGNED BY: S.S	CHECKED BY: M.S	XXXX	SL-1
SCALE: 1:250	DATE: 2023/03/29		



- LEGEND**
- MUNICIPAL COACH-STYLE STREETLIGHT LUMINAIRE AND 1.5m SCROLL MOUNTING ARM 35 WATT LED TYPE II UNLESS OTHERWISE NOTED (L40U-STM-35W32LED3K-G3-C-LE2.ies)
 - MUNICIPAL COACH-STYLE STREETLIGHT LUMINAIRE AND 1.5m SCROLL MOUNTING ARM 35 WATT LED TYPE II WITH HOUSE SHIELD UNLESS OTHERWISE NOTED (L40U-STM-35W32LED3K-G3-C-LE2-HS.ies)
 - MUNICIPAL OCTAGONAL STREETLIGHT POLE (OR DECORATIVE POLE AS OTHERWISE NOTED)
 - ISOLUX TEMPLATE LINES
 - Calculated point illuminance values (in lux - curves)
 - Calculated point illuminance values (in lux - laneways)
 - Calculated point luminance values (in candelas / sq. m. - roadway)
 - Calculated point illuminance values (in lux - entrances)
 - STREETLIGHT PANEL - TO BE STAND-ALONE PEDESTAL (2-POLE 50A-240V MAIN C/W FOUR 1-POLE 40A-120V BREAKERS)
 - HYDRO TRANSFORMER - STREETLIGHT PEDESTAL SUPPLY POINT

- NOTES:
- ALL POINT ILLUMINANCE LEVELS ARE GIVEN IN LUX.
 - ALL POINT LUMINANCE LEVELS ARE GIVEN IN CANDELAS / SQ. M.
 - POINT ILLUMINANCE AND LUMINANCE VALUES FOR PROJECT AS INDICATED ON LEGEND.
 - ISOLUX TEMPLATES FOR INDIVIDUAL STREET LIGHTS REPRESENTING 1 LUX ARE INDICATED IN BLACK, 2 LUX IN BLUE, 5 LUX IN GREEN, 10 LUX IN CYAN AND 20 LUX IN RED AS LINES APPROACH LIGHT POLE.

BENCHMARK No. 00819768488
ELEVATIONS ARE GEODETIC AND ARE REFERRED TO THE TOWN OF MARIHAM BENCHMARK NO. 00819768488 HAVING AN ELEVATION OF 255.290 METRES ONE AND ONE HALF STOREY WHITE ALUMINUM SONG HOUSE ON THE SOUTHEAST CORNER OF THE JCT OF HIGHWAYS 48 AND 47 AT BRIDGWOOD, 96.3 METRES EAST OF CENTERLINE OF HIGHWAY 48, AND 18.8 METRES SOUTH OF CENTERLINE OF HIGHWAY 47. TABLET IS SET HORIZONTALLY IN WEST FACE OF CONCRETE FOUNDATION, 3.5 METRES SOUTH OF NORTHWEST CORNER, 69 CM BELOW ALUMINUM SONG AND 30 CM ABOVE GROUND LEVEL.
ELEVATION = 255.290m

8					
7					
6					
5					
4					
3					
2	S.S	25/06/30	2ND SUBMISSION		M.S
1	S.S	23/05/16	1st SUBMISSION		M.S
No.	BY	DATE	DESCRIPTION		APPROVED

TOWN OF WHITCHURCH-STOUFFVILLE

TOWN REVIEWED	
TOWN ENGINEER TOWN OF WHITCHURCH-STOUFFVILLE	DATE:



MADORI ELM ROAD
XXX - XXX

PHOTOMETRIC DRAWING

DRAWN BY: S.S	CHECKED BY: M.S	TOWN ID:	DRAWING NO.
DESIGNED BY: S.S	CHECKED BY: M.S	XXXX	SL-2
SCALE: 1:250	DATE: 2023/03/29		

LIGHTING FIXTURE SCHEDULE

TYPE	QTY	LOCATION/MOUNTING HEIGHT	DESCRIPTION	LUMINAIRE MANUFACTURER/CAT.#	LUMINAIRE DETAILS	.IES FILE NO.	POLE MANUFACTURER/CAT.NO.	ARM MANUFACTURER/CAT.NO.
	2	POLE/ 6.2m MH	PROPOSED 35W +/- LED TYPE II SIDE-MOUNTED COACH STYLE LUMINAIRE, 120V SUPPLY C/W 10KA SURGE PROTECTOR, TOWN OF WHITCHURCH-STOUFFVILLE BRACKET AND LUMINAIRE DETAIL TYPE "B3" 1.5m SCROLL MOUNTING ARM, ON A 7.6m CLASS A SALURI BRONZE OCTAGONAL POLE TYPE "P3"	PHILIPS LUMEC/ CAT.# L40U-STM-35W32LED3K-G3-C-LE2	35W LED, 120V 4207 LUMENS 3000K TYPE II MEDIUM LLF = 0.81	L40U-STM-35W32LED3K-G3-C-LE2.ies	US/ MA-250-A-2-SB-60-F	LUMEC/ CAT# S2SAUS-1A-BKTX
	3	POLE/ 6.2m MH	PROPOSED 35W +/- LED TYPE II WITH HOUSE SHIELD SIDE-MOUNTED COACH STYLE LUMINAIRE, 120V SUPPLY C/W 10KA SURGE PROTECTOR, TOWN OF WHITCHURCH-STOUFFVILLE BRACKET AND LUMINAIRE DETAIL TYPE "B3" 1.5m SCROLL MOUNTING ARM, ON A 7.6m CLASS A SALURI BRONZE OCTAGONAL POLE TYPE "P3"	PHILIPS LUMEC/ CAT.# L40U-STM-35W32LED3K-G3-C-LE2-HS	35W LED, 120V 3336 LUMENS 3000K TYPE II MEDIUM LLF = 0.81	L40U-STM-35W32LED3K-G3-C-LE2-HS.ies	US/ MA-250-A-2-SB-60-F	LUMEC/ CAT# S2SAUS-1A-BKTX

1

Curve	STREET NAME	STREET A - ELM ROAD ENTRANCE
STREET CLASSIFICATION	LOCAL	
PEDESTRIAN CONFLICT (LOW/MED/HIGH)	LOW	
AREA CLASSIFICATION	L2-1	
REQUIREMENTS AS PER CITY/IES RP-8-21	RESULTS DESIGN FIELD MEETING CRITERIA (YES/NO)	
4.5 (M0)	4.23/15.36 N/A	YES
AVE. MAINTAINED ILLUMINANCE (Leq) (Lux)		
8.01 (M0)	1.26/7.33 N/A	YES
AVE. UNIFORMITY RATIO (Leq/Leq)		
	* NB=NORTHBOUND / SB=SOUTHBOUND	

2

Curve	STREET NAME	STREET A - BUILDING 2
STREET CLASSIFICATION	LOCAL	
PEDESTRIAN CONFLICT (LOW/MED/HIGH)	LOW	
AREA CLASSIFICATION	L2-1	
REQUIREMENTS AS PER CITY/IES RP-8-21	RESULTS DESIGN FIELD MEETING CRITERIA (YES/NO)	
4.5 (M0)	11.14/11.04 N/A	YES
AVE. MAINTAINED ILLUMINANCE (Leq) (Lux)		
8.01 (M0)	1.26/7.33 N/A	YES
AVE. UNIFORMITY RATIO (Leq/Leq)		
	* NB=NORTHBOUND / SB=SOUTHBOUND	

3

Curve	STREET NAME	STREET A - BUILDING 2
STREET CLASSIFICATION	LOCAL	
PEDESTRIAN CONFLICT (LOW/MED/HIGH)	LOW	
AREA CLASSIFICATION	L2-1	
REQUIREMENTS AS PER CITY/IES RP-8-21	RESULTS DESIGN FIELD MEETING CRITERIA (YES/NO)	
4.5 (M0)	6.48/5.17 N/A	YES
AVE. MAINTAINED ILLUMINANCE (Leq) (Lux)		
8.01 (M0)	1.35/1.81 N/A	YES
AVE. UNIFORMITY RATIO (Leq/Leq)		
	* EB=EASTBOUND / WB=WESTBOUND	

4

Continuous Streets (Straight - Using Illuminance Method)**	STREET NAME	STREET A - NINTH LINE ENTRANCE
STREET CLASSIFICATION	LOCAL	
PEDESTRIAN CONFLICT (LOW/MED/HIGH)	LOW	
AREA CLASSIFICATION	L2-1	
REQUIREMENTS AS PER CITY/IES RP-8-21	RESULTS DESIGN FIELD MEETING CRITERIA (YES/NO)	
4.5 (M0)	8.17/12.74 N/A	YES
AVE. MAINTAINED ILLUMINANCE (Leq) (Lux)		
8.01 (M0)	5.84/3.27 N/A	YES
AVE. UNIFORMITY RATIO (Leq/Leq)		
	* EB=EASTBOUND / WB=WESTBOUND	

5

Continuous Streets (Straight - Using Illuminance Method)**	STREET NAME	STREET A - ELM ROAD ENTRANCE
STREET CLASSIFICATION	LOCAL	
PEDESTRIAN CONFLICT (LOW/MED/HIGH)	LOW	
AREA CLASSIFICATION	L2-1	
REQUIREMENTS AS PER CITY/IES RP-8-21	RESULTS DESIGN FIELD MEETING CRITERIA (YES/NO)	
4.5 (M0)	16.21/9.18 N/A	YES
AVE. MAINTAINED ILLUMINANCE (Leq) (Lux)		
6.01 (M0)	2.62/2.98 N/A	YES
AVE. UNIFORMITY RATIO (Leq/Leq)		
	* NB=NORTHBOUND / SB=SOUTHBOUND	

6

Continuous Streets (Straight/Curve >600m-Using Luminance Method)	STREET NAME	STREET A - BUILDING 1 & BUILDING 3
STREET CLASSIFICATION	LOCAL	
PEDESTRIAN CONFLICT (LOW/MED/HIGH)	LOW	
AREA CLASSIFICATION	L2-1	
REQUIREMENTS AS PER CITY/IES RP-8-21	RESULTS DESIGN FIELD MEETING CRITERIA (YES/NO)	
4.5 (M0)	0.88 /1.26 N/A	YES
AVE. LUMINANCE (Leq) (cd/m²)		
6.01 (M0)	2.00 /3.32 N/A	YES
MAX. YIELDING LUMINANCE (Lmax/Leq)		
10.01 (M0)	3.56 /6.53 N/A	YES
Continuous Streets (Curve >150m-Using Illuminance Method)		
4.5 (M0)	14.74/13.53 N/A	YES
AVE. ILLUMINANCE (Leq) (Lux)		
6.01 (M0)	2.14 /3.08 N/A	YES
AVE. UNIFORMITY RATIO (Leq/Leq)		
	* EB=EASTBOUND / WB=WESTBOUND	

7

PERMETER	CITY REQUIREMENT	CALCULATED ILLUMINANCE
ELM ROAD ENTRANCE	5 Lux MAX	3.5 Lux MAX

8

PERMETER	CITY REQUIREMENT	CALCULATED ILLUMINANCE
325 ELM ROAD	5 Lux MAX	4.8 Lux MAX

9

PERMETER	CITY REQUIREMENT	CALCULATED ILLUMINANCE
GLAD PARK PUBLIC SCHOOL	5 Lux MAX	2.3 Lux MAX

9

PERMETER	CITY REQUIREMENT	CALCULATED ILLUMINANCE
NINTH LINE ENTRANCE	5 Lux MAX	3.6 Lux MAX



[illegible]

KEY PLAN
N.T.S.

60x2 3/8" (OD) Pipe
60x2 3/16" thk. wall

10 (3/8") rivnut

88 (3 1/2") R

10x3/8" mounting plate

25 (1") channel bend to suit

100 (4") hole

100 (5/8") hole

19 (5/4") punch hole as shown

31 (1 1/4") hole

100 (3/4") hole

11 (7/16") hole (typ.)

25 (1") hole

8 (5/16") thk. alum. plate

SECTION A-A

SECTION B-B

BRACKET

MOUNTING PLATE AT POLE

MOUNTING PLATE AT LUMINAIRE

45W or 60W LED **
Decorative Luminaire
Subject to Town
Approval

Extruded aluminum channel

19 (5/4") punch hole as shown

31 (1 1/4") hole

100 (3/4") hole

11 (7/16") hole (typ.)

25 (1") hole

8 (5/16") thk. alum. plate

MOUNTING PLATE AT POLE

MOUNTING PLATE AT LUMINAIRE

TOWN OF WHITCHURCH-STOUFFVILLE

DATE: JUL. 11, 2009 **

APPROVED: [Signature]

ISSUE NO. 2 **

SCALE: N.T.S.

DWG. NO. WS-050

** REVISED FOR SALUKI
BRONZE
OCTAGONAL POLES.

BRACKET
AND
LUMINAIRE
DETAIL
TYPE "B3"

Concrete Pole (See Note 1, 3)

Handhole and Cover Plate

Top Soil

FINISHED GRADE

100mm Flexible PVC Duct

75mm Rigid PVC Duct

Cable Entrance Apertures

Pour Concrete Around Pole Base up to 100mm Below Cable Apertures

NOTES:

1. Type of Pole to Suit Road Classification per Town of Whitchurch-Stouffville Standards Section 'H' Street Lighting and Standard Drawing W5500 Series
2. Push 50mm Flexible PVC Duct 300mm into Apertures
3. Poles to be installed by auguring.

Handhole Location

Pole

Edge of Pavement

Traffic Direction

Roadway

HANDHOLE LOCATION

CONNECTION DETAIL

CSA Fused Connector Kit c/n 10A Ceramic Wedge Fuse.
Power is Disconnected to Fuse When Connector is Pulled Apart

Green to Luminaire Housing Ground Lug

Connection to Ground Lug (Install Post Split Bolt)

Compression Connectors (Insulated or Taped)


Neutral

Black (Hot Line)

White (Neutral)

Hot Line

Bare Grounds

TOWN OF WHITCHURCH-STOUFFVILLE		DATE: JUL 11, 2009
 POLE INSTALLATION DETAIL		APPROVED: SC
		ISSUE NO. 2
		SCALE: N.T.S.
		DWG. NO. WS-500

<p>BENCHMARK No. 00819768488</p> <p>ELEVATIONS ARE GEODETIC AND ARE REFERRED TO THE TOWN OF MARIHAM BENCHMARK No. 00819768488 HAVING AN ELEVATION OF 255.290 METRES ONE AND ONE HALF STOREY WHITE ALUMINUM SINGH HOUSE ON THE NORTHWEST CORNER OF THE JCT OF HIGHWAYS 48 AND 47 AT RINGWOOD, 90.3 METRES EAST OF CENTRELINE OF HIGHWAY 48, AND 16.8 METRES SOUTH OF CENTRELINE OF HIGHWAY 47. TABLET IS SET HORIZONTALLY IN WEST FACE OF CONCRETE FOUNDATION, 3.5 METRES SOUTH OF SOUTHEAST CORNER, 89 CM BELOW ALUMINUM SINGH AND 30 CM ABOVE GROUND LEVEL. ELEVATION = 255.290m</p>				
8				
7				
6				
5				
4				
3				
2	S.S	25/06/30	2ND SUBMISSION	M.S
1	S.S	23/05/16	1st SUBMISSION	M.S
No.	BY	DATE	DESCRIPTION	APPROVED

TOWN OF WHITCHURCH-STOUFFVILLE

<p style="text-align: center; font-weight: bold; margin-bottom: 20px;">TOWN REVIEWED</p> <div style="display: flex; justify-content: space-between; margin-top: 100px;"> <div> <p>TOWN ENGINEER</p> <p>TOWN OF WHITCHURCH-STOUFFVILLE</p> </div> <div> <p>DATE:</p> </div> </div>	
---	--

COLM
ENGINEERING LTD.

400 MAIN STREET EAST, SUITE 214
MILTON, ONTARIO L9T 4X5
Tel. No. 289-951-2524

MADORI ELM ROAD

XXXX

DETAIL DRAWING

DRAWN BY: S.S	CHECKED BY: M.S	TOWN ID:	DRAWING NO.
DESIGNED BY: S.S	CHECKED BY: M.S	XXXX	SL-3
SCALE: NTS	DATE: 2023/03/29		

