

SEWER INVERT DATA TABLE

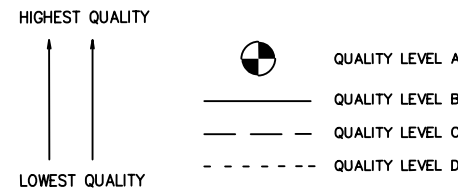
MH/CB	DIRECTION	DIAMETER	INVERT DEPTH	TOP OF LID/GRATE ELEVATION	INVERT ELEVATION
CB#1	NW NE S	600 600 600	1.33 1.33 1.36	271.02 271.02 271.02	269.69 269.79 269.66
CB#2	W	300	1.03	271.07	270.04
STM MH#1	NW E W	750+ 600 600	1.62 1.65 1.65	271.42 271.42 271.42	269.80 269.77 N/A
STM MH#2	NE SE W	500+ 600 600	1.36 1.47 1.32	271.21 271.21 271.21	269.85 269.74 269.89
SAN MH#1	E S	100 300	2.36 2.94	271.18 271.18	268.82 268.24

INFORMATION OBTAINED FROM RECORDS
NOT FIELD VERIFIED BY ONSITE LOCATES INC.

UNDERGROUND UTILITY NOTES

THE UTILITY DATA DEPICTED ON THIS DRAWING WERE ACQUIRED IN ACCORDANCE WITH ASCE STANDARD 38-02. THE INFORMATION IS SHOWN BY ATTRIBUTED QUALITY LEVELS WHICH ARE DEFINED AS FOLLOWS:

DATA QUALITY LEVEL



QUALITY LEVEL "A" - INFORMATION OBTAINED BY ACTUAL PHYSICAL EXPOSURE OF TARGETED UTILITIES AND SUBSEQUENT MEASUREMENT OF THE EXPOSED PRECISE HORIZONTAL AND VERTICAL POSITION.

QUALITY LEVEL "B" - INFORMATION OBTAINED USING GEOPHYSICAL LOCATE TECHNIQUES TO IDENTIFY THE EXISTENCE AND APPROXIMATE HORIZONTAL POSITION OF THE DESIGNATED UTILITIES.

QUALITY LEVEL "C" - INFORMATION OBTAINED BY SURVEYING AND PLOTTING VISIBLE UTILITY FEATURES AND BY USING PROFESSIONAL JUDGMENT IN CORRELATING THIS INFORMATION TO THE QUALITY "D" INFORMATION OBTAINED.

QUALITY LEVEL "D" - INFORMATION DERIVED FROM UTILITY RECORDS OR VERBAL RECOLLECTIONS

ALL SERVICES ARE QUALITY "D" UNLESS NOTED OTHERWISE.
LEVEL "D" RECORD INFORMATION SHOWN ON THIS PLAN HAVE BEEN PLOTTED APPROXIMATELY AS PER THE RECORDS FOUND AND COULD NOT BE FIELD VERIFIED WITHIN THE SCOPE OF THIS PROJECT. IF FURTHER VERIFICATION IS REQUIRED, IT IS SUGGESTED THAT LEVEL "A" METHODOLOGIES BE EMPLOYED.

LOST SIGNAL - DENOTES/INDICATES A POINT WHERE Q-L-B METHODS COULD NO LONGER ASCERTAIN THE HORIZONTAL POSITION OF A FACILITY.

QUALITY LEVEL "D" INFORMATION COMPILED FROM RECORDS

CAUTION: CALL BEFORE YOU DIG

THIS PLAN IS INTENDED FOR DESIGN PURPOSES ONLY. OTHER BURIED UTILITIES MAY EXIST WHICH ARE NOT SHOWN DUE TO INSUFFICIENT INFORMATION OR IMPROPER INSTALLATION. CONTACT ALL POTENTIAL OWNERS OF UNDERGROUND UTILITIES PRIOR TO CONSTRUCTION OR BREAKING GROUND.
IT IS THE RESPONSIBILITY OF THE CONTRACTOR/BUILDER TO ENSURE THE APPROPRIATE LEGAL REQUIREMENTS ARE MET.

SEWER INVERT NOTE:

SEWER INVERT DEPTHS ARE MANUALLY MEASURED FROM THE LID/GRATE OF THE GIVEN FEATURE.

ANNOTATIONS DISPLAYED AS *INTERPOLATED* WITH AN ASTERISK* HAVE BEEN INTERPOLATED FROM RECORDS AND WERE NOT FIELD VERIFIED BY ONSITE LOCATES LTD.

INVERT DEPTH MEASUREMENTS ARE FROM THE ASSUMED BOTTOM OF THE FACILITY STRUCTURE.

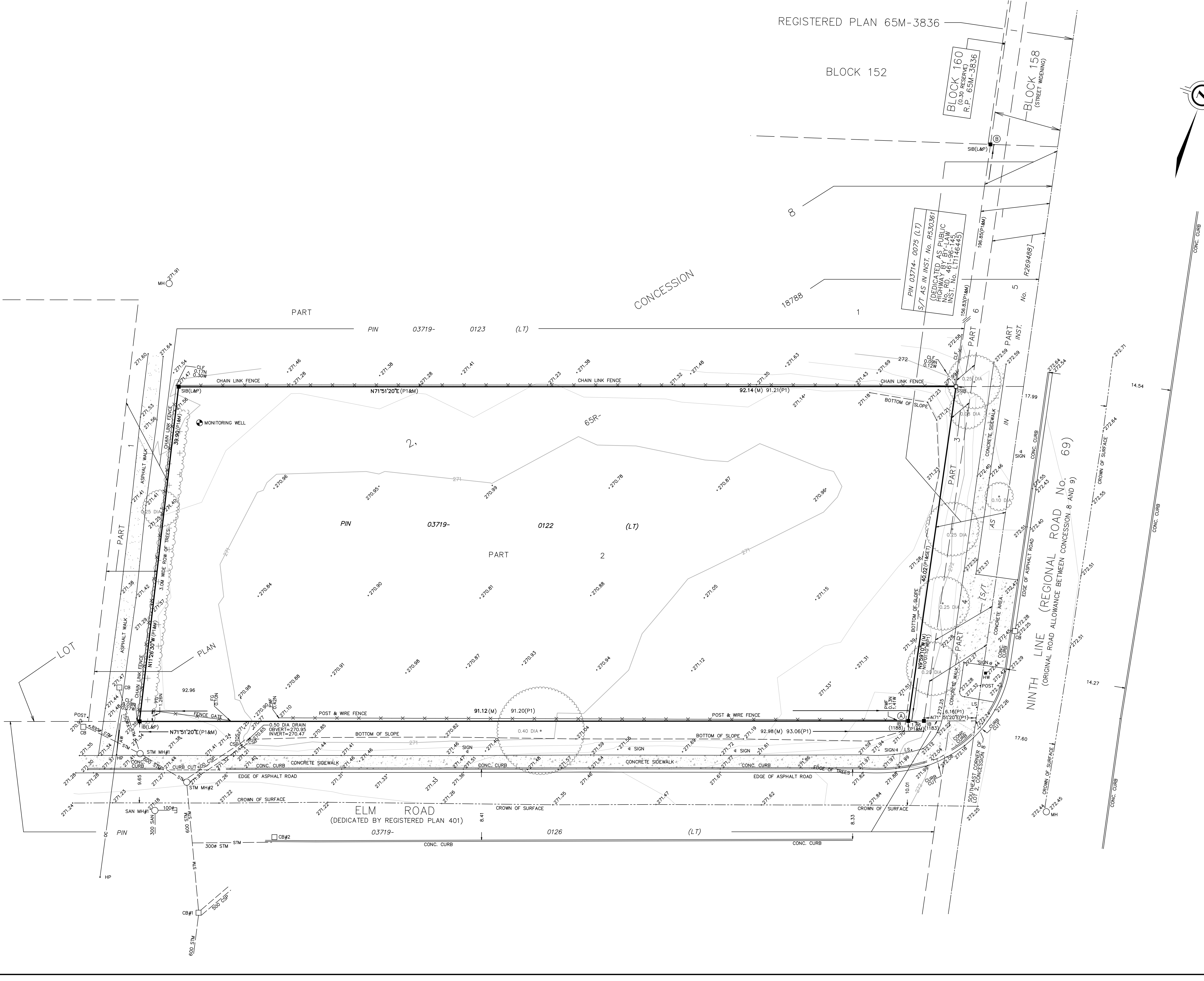
DEPTHS ARE NOT SUITABLE FOR EXCAVATION PURPOSES. SEWER NETWORK CONNECTIONS WERE COMPILED WHERE FIELD EVIDENCE COINCIDED WITH AS-BUILT RECORDS.
WHERE NO DEPTH INFORMATION COULD BE OBTAINED, UTILITIES ARE ASSUMED TO BE AT STANDARD INSTALLATION DEPTH FOR THE SPECIFIC TYPE OF UTILITY.

THE MOST RELIABLE WAY TO PRECISELY DETERMINE THE HORIZONTAL AND VERTICAL LOCATION OF AN UNDERGROUND UTILITY IS THROUGH PHYSICAL EXPOSURE USING SAFE DIGGING TECHNIQUES (COMMONLY PERFORMED WITH HYDRO VACUUM EXCAVATION)

INVERT DEPTH MEASUREMENTS HEREON ARE PROVIDED IN METRES AND CAN BE CONVERTED TO FEET BY DIVIDING BY 0.3048.

LEGEND

— SAN —	DENOTES UNDERGROUND SANITARY SEWER
— STM —	DENOTES UNDERGROUND STORM SEWER
— CB —	DENOTES CORRUGATED STEEL PIPE
□ CB	DENOTES SINGLE CATCHBASIN
○ STM MH	DENOTES STORM MANHOLE
○ SAN MH	DENOTES SANITARY MANHOLE
— CSP —	DENOTES CORRUGATED STEEL PIPE
—	DENOTES END CAP



PLAN OF SURVEY SHOWING TOPOGRAPHY OF
PART OF LOT 2
CONCESSION 8
GEOGRAPHIC TOWNSHIP OF WHITCHURCH
NOW IN THE
TOWN OF WHITCHURCH-STOUFFVILLE
MUNICIPALITY OF YORK

SCALE 1 : 200
5 0 5 10 metres

J.D. BARNES LIMITED
© COPYRIGHT 2023

METRIC DISTANCES AND COORDINATES SHOWN ON THIS PLAN ARE IN METRES AND CAN BE CONVERTED TO FEET BY DIVIDING BY 0.3048.

NOTES

BEARINGS ARE UTM GRID, DERIVED FROM OBSERVED REFERENCE POINTS A AND B, BY REAL TIME NETWORK (RTN) OBSERVATIONS, UTM ZONE 17, NAD83 (CSRS) (2010.0).

DISTANCES ARE GROUND AND CAN BE CONVERTED TO GRID BY MULTIPLYING BY THE COMBINED SCALE FACTOR OF 0.999800.

FOR BEARING COMPARISONS, A ROTATION OF 0°15'40" COUNTER-CLOCKWISE WAS APPLIED TO BEARINGS ON P1.

INTEGRATION DATA			
OBSERVED REFERENCE POINTS (ORPs): UTM ZONE 17, NAD83 (CSRS) (2010.0).			
COORDINATES TO URBAN ACCURACY PER SECTION 14 (2) OF REG 216/10.			
POINT ID	EASTING	NORTHING	
ORP (A)	639 817.08	4 870 375.22	
ORP (B)	639 782.95	4 870 569.05	
COORDINATES CANNOT, IN THEMSELVES, BE USED TO RE-ESTABLISH CORNERS OR BOUNDARIES SHOWN ON THIS PLAN.			
THE RESULTANT TIE BETWEEN ORP (A) AND ORP (B) IS 196.85 N8°59'10"W			

LEGEND

■	DENOTES	SURVEY MONUMENT FOUND
□	DENOTES	SURVEY MONUMENT SET
SIB	DENOTES	STANDARD IRON BAR
SIB	DENOTES	SHORT STANDARD IRON BAR
IB	DENOTES	IRON BAR
M	DENOTES	MEASURED
JOB	DENOTES	J.D. BARNES LIMITED
L&P	DENOTES	LLOYD & PURCELL LIMITED, O.L.S.
1188	DENOTES	C.A. SEXTON, O.L.S.
1183	DENOTES	H.F. GRANDER, O.L.S.
P1	DENOTES	PLAN 65R-18788
S/T	DENOTES	SUBJECT TO EASEMENT
R.P.	DENOTES	REGISTERED PLAN
CLF	DENOTES	CHAIN LINK FENCE
PWF	DENOTES	POST & WIRE FENCE
FG	DENOTES	FENCE GATE
TOS	DENOTES	TOP OF SLOPE
AW	DENOTES	ANCHOR WIRE
CSP	DENOTES	CORRUGATED STEEL PIPE
DIA	DENOTES	DIAMETER
CONC.	DENOTES	CONCRETE
N/S/E/W	DENOTES	NORTH/SOUTH/EAST/WEST
CB	DENOTES	SINGLE CATCHBASIN
○ MH	DENOTES	MANHOLE
■ HW	DENOTES	HANDWELL
HP	DENOTES	HYDRO POLE
LS	DENOTES	LIGHT STANDARD
-OC-	DENOTES	OVERHEAD HYDRO/PHONE CABLE
○	DENOTES	DECIDUOUS TREE
○	DENOTES	CONIFEROUS TREES
●	DENOTES	MONITORING WELL

BENCHMARK

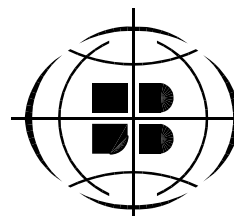
ELEVATIONS SHOWN ON THIS PLAN ARE RELATED TO GEODETIC DATUM AND ARE DERIVED FROM TOWN OF WHITCHURCH-STOUFFVILLE BENCHMARK No. 13020070004 HAVING A PUBLISHED ELEVATION OF 264.334 METRES (CGVD28-78)

SURVEYOR'S CERTIFICATE

- I CERTIFY THAT:
- THIS SURVEY AND PLAN ARE CORRECT AND IN ACCORDANCE WITH THE SURVEYS ACT, THE SURVEYORS ACT AND THE REGULATIONS MADE UNDER THEM.
 - THE SURVEY WAS COMPLETED ON OCTOBER 24 2023.

NOVEMBER 1, 2023
DATE
ABDUL ASAD
ONTARIO LAND SURVEYOR

SUBSURFACE UTILITY FIELD WORK WAS COMPLETED ON THE 8TH DAY OF MARCH, 2023




ONSITE LOCATES INC.
UTILITY LOCATE SERVICES
A wholly owned subsidiary of J.D. Barnes Ltd.
140 RENFREW DRIVE, SUITE 100, MARKHAM, ON L3R 6B3
T: 1-800-805-6155 www.onsitelocates.ca

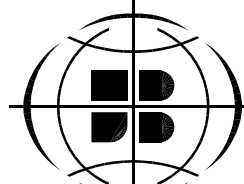
DRAWN BY: SB	CHECKED BY: JS	REFERENCE NO.: 23-46-33872
FILE: Q-7-46-33872/DRAWING	DATED: 03/14/2023	

PLOTTED: 11/1/2023

ASSOCIATION OF ONTARIO
LAND SURVEYORS
PLAN SUBMISSION FORM
V-47054



THIS PLAN IS NOT VALID
UNLESS IT IS AN UNDOSSSED
ORIGINAL COPY
ISSUED BY THE SURVEYOR
in accordance with
Regulation 1026, Section 29(3)



J.D. BARNES
LIMITED
SURVEYING
MAPPING
GIS
LAND INFORMATION SPECIALISTS
140 RENFREW DRIVE, SUITE 100, MARKHAM, ON L3R 6B3
T: (905) 477-3600 F: (905) 477-3882 www.jdbarnes.com

DRAWN BY: YN/KGR	CHECKED BY: AA	REFERENCE NO.: 23-21-895-00
FILE: G:\23-21-895\00\Drawing\23-21-895-00.dgn	DATED: NOVEMBER 1, 2023	