

PLANT LIST  
DECIDUOUS TREES

KEY	QTY.	BOTANICAL NAME	COMMON NAME	CAL. (mm)	HT. (cm)	SPREAD (cm)	ROOTS	REMARKS
AFJ60	4	Acer x freemanii 'Jeffersred'	Autumn Blaze Maple	60	-	-	WB	-
GTK60	8	Gleditsia triacanthos 'Skyline'	Skyline Honeylocust	60	-	-	WB	-
SRJ60	6	Syringa reticulata 'Ivory Silk'	Ivory Silk Tree Lilac	60	-	-	WB	-
TCG60	3	Tilia cordata 'Glenleven'	Glenleven Linden	60	-	-	WB	-

CONIFEROUS TREES

PP200	9	Picea pungens	Colorado Spruce	-	200	-	WB	-
PPC200	15	Picea pungens 'Glauca'	Colorado Blue Spruce	-	200	-	WB	-

DECIDUOUS SHRUBS

CSS0	30	Cornus stolonifera	Red-Osier Dogwood	-	50	30	3 gal. pot	-
EAC60	126	Euonymus alatus 'Compacta'	Dwarf Burning Bush	-	60	30	3 gal. pot	-
PGC60	6	Potentilla fruticosa 'Goldfinger'	Goldfinger Potentilla	-	60	30	3 gal. pot	-
POS0	20	Physocarpus opulifolius	Common Ninebark	-	50	30	3 gal. pot	-
RAS0	30	Rhus aromatica	Fragrant Sumac	-	50	50	3 gal. pot	-
SBG60	84	Spiraea x bumalda 'Goldflame'	Goldflame Spiraea	-	60	30	3 gal. pot	-
SJL60	10	Spiraea japonica 'Little Princess'	Little Princess Spiraea	-	60	30	3 gal. pot	-

CONIFEROUS SHRUBS

TW50	82	Taxus x media 'densiformis'	Dense Yew	-	-	50	CG / FP	-
------	----	-----------------------------	-----------	---	---	----	---------	---

BROADLEAF EVERGREEN SHRUBS

EFC	16	Euonymus fortunei 'Coloratus'	Coloratus Euonymus	-	-	50	CG / FP	-
-----	----	-------------------------------	--------------------	---	---	----	---------	---

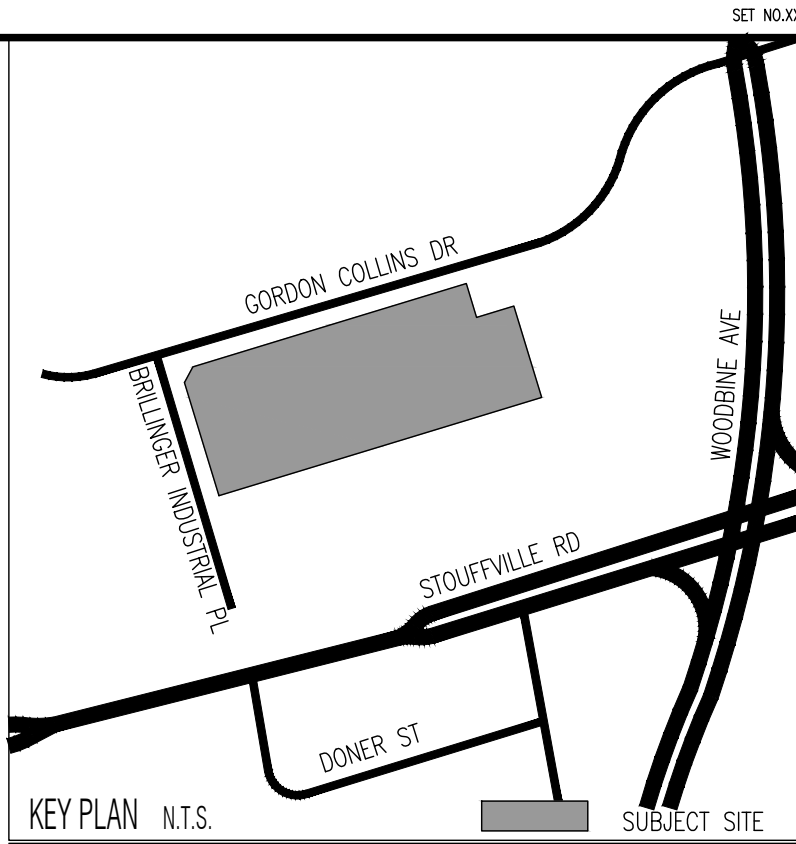
PERENNIALS & ORNAMENTAL GRASSES

CKF	24	Calamagrostis x 'Karl Foerster'	Feather Reed Grass	-	-	-	1 gal. pot	-
CLA	54	Chasmanthium latifolium	Northern Sea Oats	-	-	-	1 gal. pot	-
HSD	72	Hemerocallis 'Stella D'Oro'	Stella D'Oro Daylily	-	-	-	1 gal. pot	-
PAT	48	Perovskia atriplicifolia	Russian Sage	-	-	-	1 gal. pot	-

WB - WIRE BASKET CG - CONTAINER GROWN FP - FIELD POTTED pot - POT GROWN

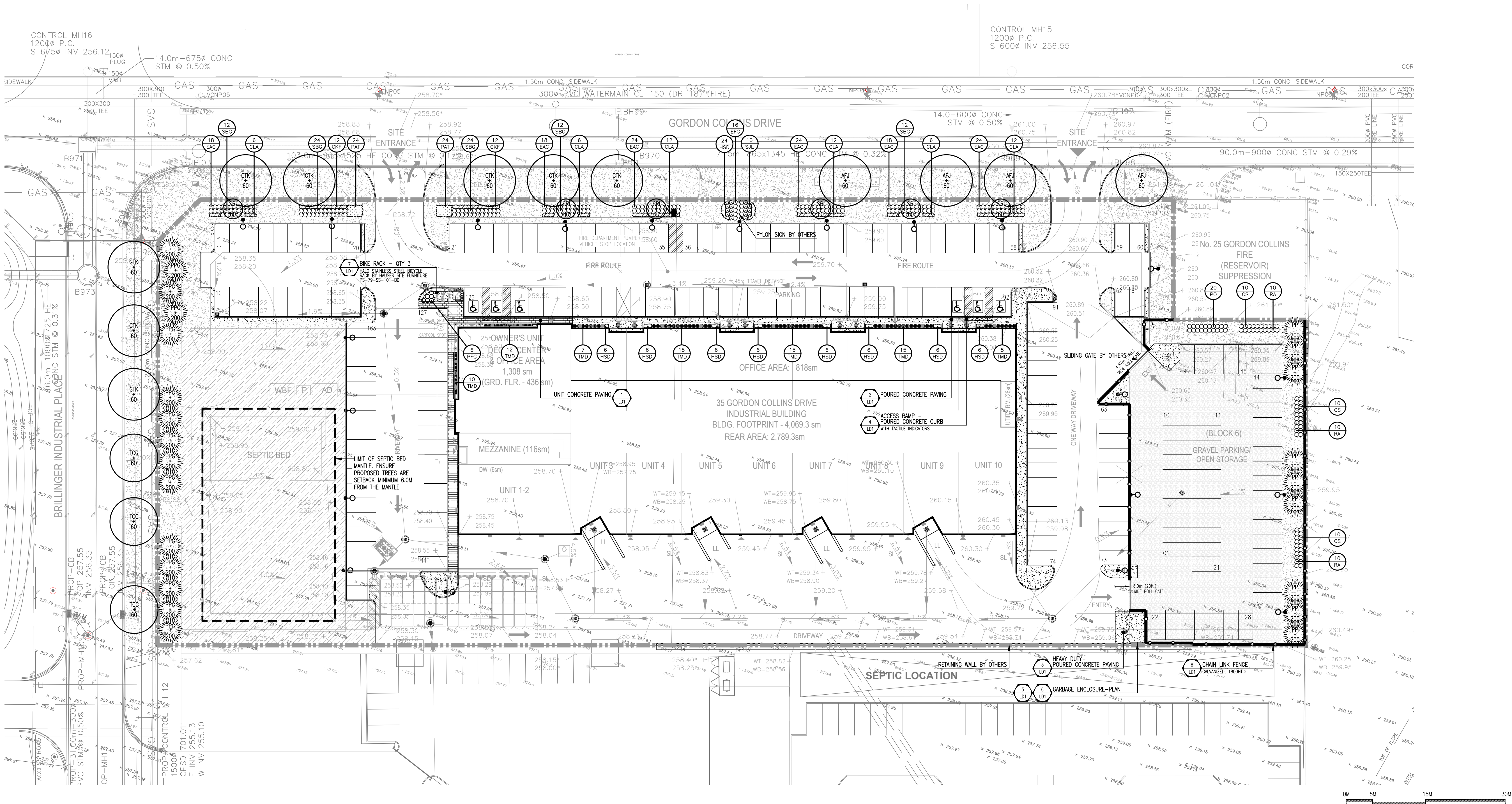
NATIVE MEADOW SEED MIXTURE  
ASPLEYAS SPICATA 12%  
ASTER NOVE-ANGULAE 12%  
ELMIS CANADENSIS 12%  
MONARDIA FISTULOSA 12%  
RUDECKIA HIRT 14%  
SOLEADO CANADENSIS 12%  
SOLEADO NUDIFLORUS 12%  
SORGHASTRUM NUDUM 14%  
SEED SOURCE: OSC SEEDS  
P.O. BOX 7, WATERLOO, ON, N2J 3J6  
TEL # 1-519-886-0557  
SUBSTITUTIONS DUE TO SEASONAL AVAILABILITY ARE SUBJECT TO APPROVAL BY LANDSCAPE ARCHITECT.  
SEEDING APPLICATION METHOD: SEED DRILLING BY APPROVED CONTRACTOR  
APPLICATION RATE: 22-25 KG/HA

- GENERAL LANDSCAPE NOTES:
- CONTRACTOR TO PROVIDE 48 HOURS NOTICE TO TOWN OF WHITCHURCH-STOUFFVILLE PRIOR TO COMMENCING ANY WORK ON SITE.
  - FINAL PLANTING LOCATIONS TO BE VERIFIED AND APPROVED BY THE LANDSCAPE ARCHITECT AND TOWN OF WHITCHURCH-STOUFFVILLE PRIOR TO PLANTING.
  - THE CONTRACTOR SHALL REMOVE ALL T-BAR STAKING FOLLOWING ONE GROWING SEASON.
  - AT TIME OF INSPECTION FOR ACCEPTANCE, ALL PLANTING AREAS SHALL BE CULTIVATED, FREE OF WEEDS, AND MAN-MADE DEBRIS.
  - ALL PLANT MATERIAL SHALL BE STOCKPILED IN SHADE AND KEPT WELL-WATERED UNTIL PLANTING. ALL PLANTINGS TO BE WATERED ONCE A WEEK FOR THREE WEEKS FOLLOWING PLANTING.
  - PLANT MATERIAL SHALL BE SHADED WITH COOL TARP PRIOR TO PLANTING.
  - NO TREE PITS SHALL BE LEFT OPEN OVERNIGHT.



LEGEND

- PROPERTY LINE
- LIMIT OF SEPTIC BED
- CHAIN LINK FENCE
- SOD PLANTING
- NATIVE MEADOW SEED MIXTURE
- UNIT CONCRETE PAVING
- CONCRETE PAVING
- GROUNDCOVERS AND PERENNIALS PLANTING
- DECIDUOUS TREE PLANTING (LARGE)
- DECIDUOUS SHRUBS PLANTING (SMALL)
- CONIFEROUS SHRUBS PLANTING (SMALL)
- BROADLEAF EVERGREEN SHRUBS PLANTING
- PERENNIAL AND ORNAMENTAL GRASS PLANTING
- PLANT QUANTITY, PLANT KEY, PLANT SPECIES
- DETAIL NUMBER, DETAIL KEY, DRAWING NUMBER
- LIGHT STANDARD
- POT LIGHTS
- WALL LIGHTS



Base Information

Grading and Servicing information received in digital format from J and B Engineering Inc., Project No.230258, Drawing No.P-300 and P-301 dated and received February 28, 2025.

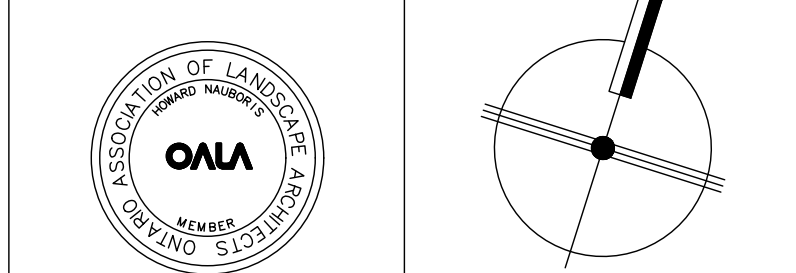
Site plan information received in digital format from Fairgate Homes and drawn by Joseph n Campitelli Architect Inc., Project No.218.15.D, sheet No.A.100 and received February 28, 2025.

Electrical information received in digital format from Novatrend, Project No.2401, drawing No.E-1 received November 6, 2024.

2	For Submission	PB	25 03 07
1	For Submission	FC	24 11 08
No	Revision	By	Yr Mo Da

All drawings and designs are the property of Cosburn Nauboris Limited and may not be used or reproduced without permission. This drawing must not be scaled.

Invalid Unless Signed Original



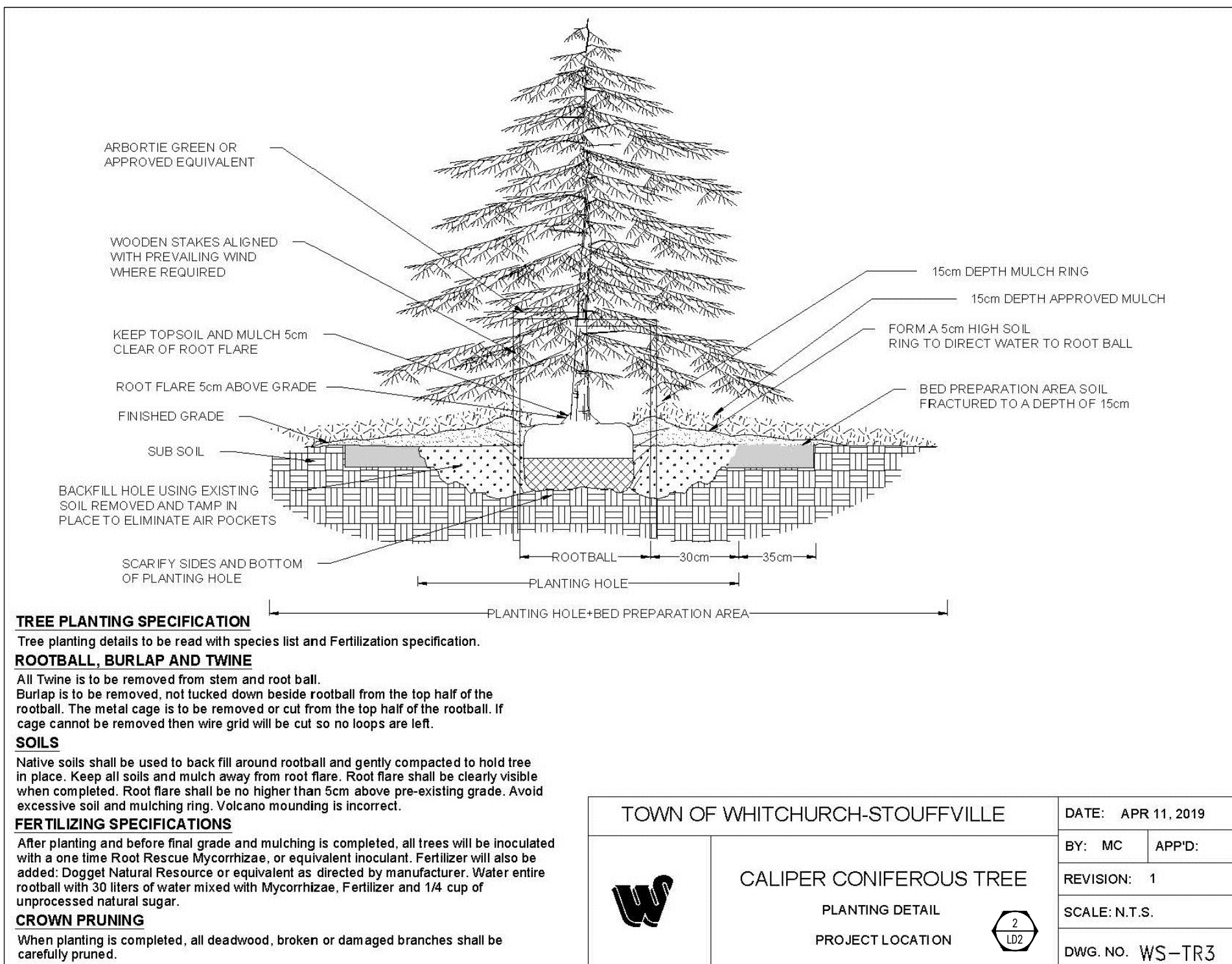
cosburn nauboris  
landscapearchitects  
20 crown steel dr. suite 2  
markham, on l3r 9v3  
1 905 940 4443  
cosburnnauboris.ca

35 GORDON COLLINS RD  
FAIRGATE HOMES  
TOWN OF WHITCHURCH-STOUFFVILLE

LANDSCAPE PLAN	
Drawn by	FC
Checked by	SKC
Approved by	HN
Scale	1:400
Plot Date	2025-03-07
Project	2438
Drawing No.	L1








2	For Submission	PB	25 03 07
1	For Submission	FC	24 11 08
No	Revision	By	Yr Mo Da

All drawings and designs are the property of Cosburn Naboris Limited and may not be used or reproduced without permission. This drawing must not be scaled.

Invalid Unless Signed Original	
--------------------------------	---

<b>cosburn naboris LTD</b> landscapearchitects	20 crown steel dr. suite 2 markham, on l3r 9x9 +905 940 4443 cosburnnaboris.ca
---	---

35 GORDON COLLINS RD  
FAIRGATE HOMES  
TOWN OF WHITCHURCH—STOUFFVILLE

DETAILS

Drawn by	FC	Scale	AS SHOWN
Checked by	SKC	Plot Date	2025-03-07
Approved by	HN	Project	2438

LD2  
Drawing