



TOWN OF WHITCHURCH-
STOUFFVILLE OFFICIAL
PLAN REVIEW

Open House

September 23, 2020
6:00 PM - 8:00 PM



Who's Listening Today?

Town of Whitchurch-Stouffville

- Meaghan Craven, Manager, Planning Policy
- Randall Roth, Senior Policy Planner

Consulting Team (WSP)

- Gregory Bender, Project Manager
- Christine Furtado, Consultation Lead
- Alejandro Cifuentes, Policy Lead

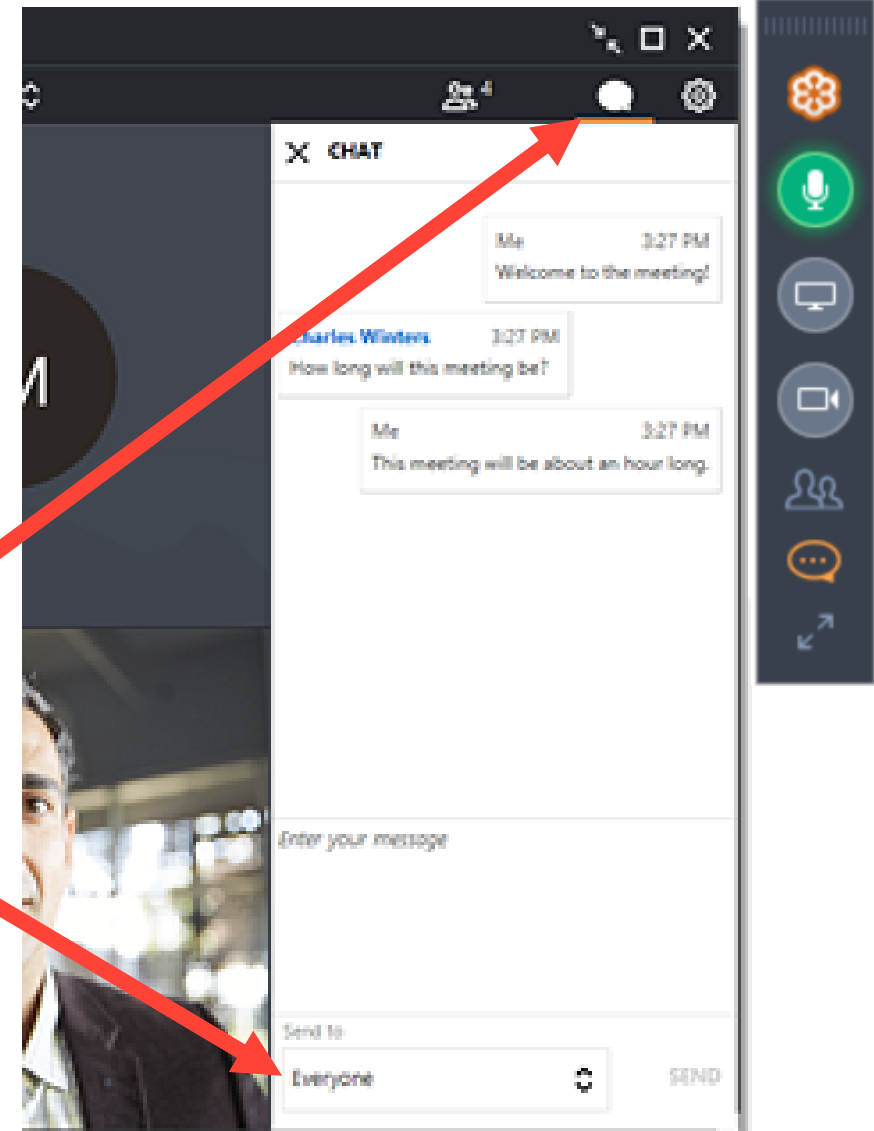
Meeting Objectives

- To provide an overview of the Official Plan Review
- To generate discussion and interest in the future of land use planning in the Town
- To collect feedback on the Vision for the Future
- To provide a variety of engagement opportunities for the public
- To answer your questions about the Official Plan Review



Housekeeping Items

1. This meeting is being recorded and your microphone will be **muted**.
2. Use the **Chat Function**.
3. Select **“Everyone”** when entering your questions.

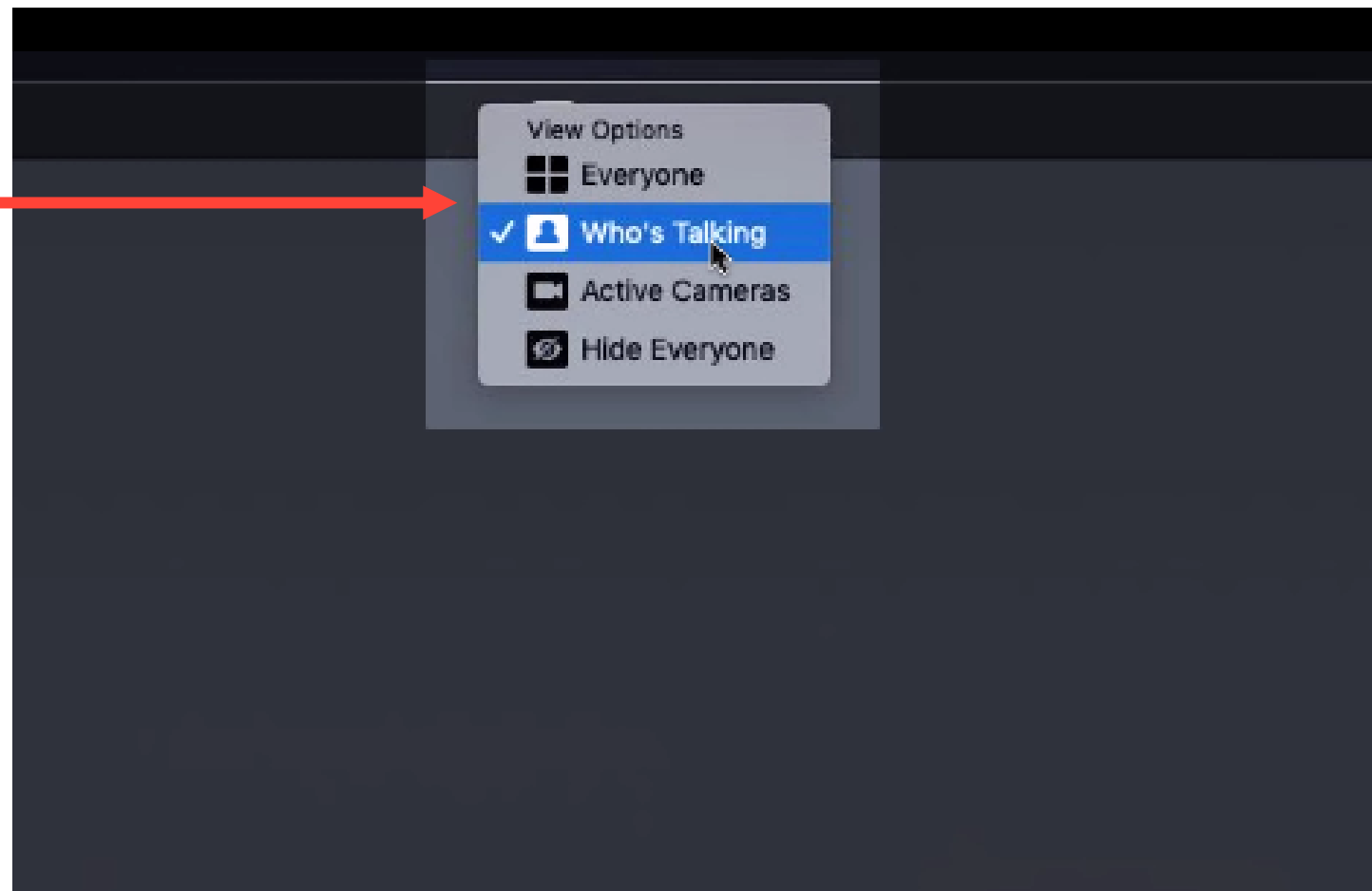


Housekeeping Items

Select your viewing options at the top of the screen.

Select **“Who’s Talking”** to view the presenter.

Select **“Hide Everyone”** in order to have a better view of the presentation.



Please Participate in the Live Poll

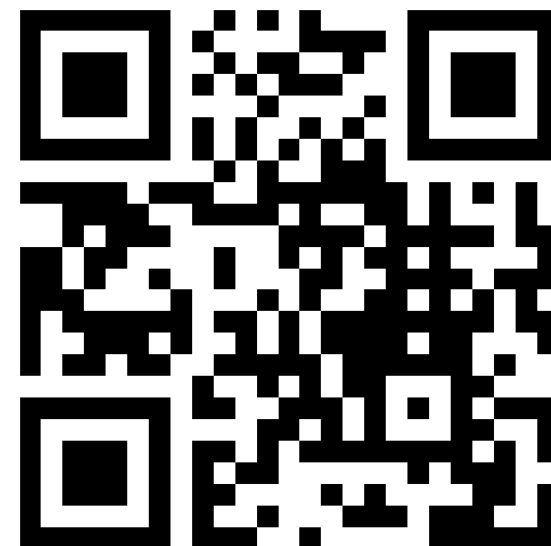
This presentation uses a secure external website for live polling and feedback.

Please visit:
www.menti.com

2. Please enter code:
72 38 36 8

OR

3. Please **Scan** the QR code with your **mobile phone**



Agenda

1. Housekeeping Items & Meeting Objectives
2. The Town's Official Plan Review Process
 - a) *Purpose and Process*
 - b) *Official Plan Current Context*
 - c) *Official Plan Future Context*
3. Visioning Discussion
4. Question and Answer Period
5. Next Steps and Engagement Opportunities

8

Let's Test The Live Poll!



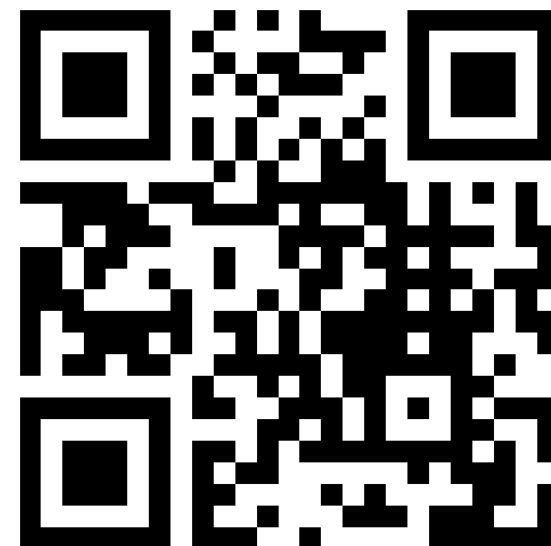
Reminder:

1. Please visit:
www.menti.com

2. Please enter
code:
72 38 36 8

OR

3. Please **Scan** the QR
code with your
mobile phone



Go to www.menti.com and use the code 72 38 36 8

Please submit
your response
in **Menti**
during the
Live Meeting!

What is your favorite type of snack?

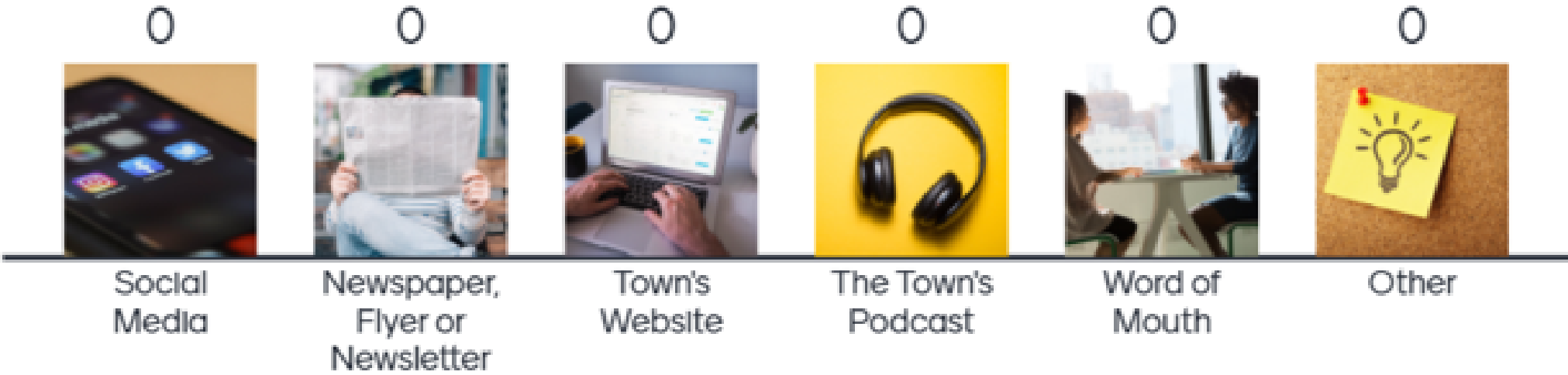


Press S to show Image



Go to www.menti.com and use the code 72 38 36 8

How did you hear about this meeting?



Go to www.menti.com and use the code 72 38 36 8

 Mentimeter

If you selected "other" please describe how you heard about this meeting here:



The Official Plan Review

13



What is an Official Plan?

- An Official Plan outlines the goals, objectives and policies to manage and direct growth
- Official Plans manage the social, economic, built and natural environment priorities
- An Official Plan directs changes in land use (type of land use, built form, character, etc.), which is implemented through the Town's Zoning By-law.

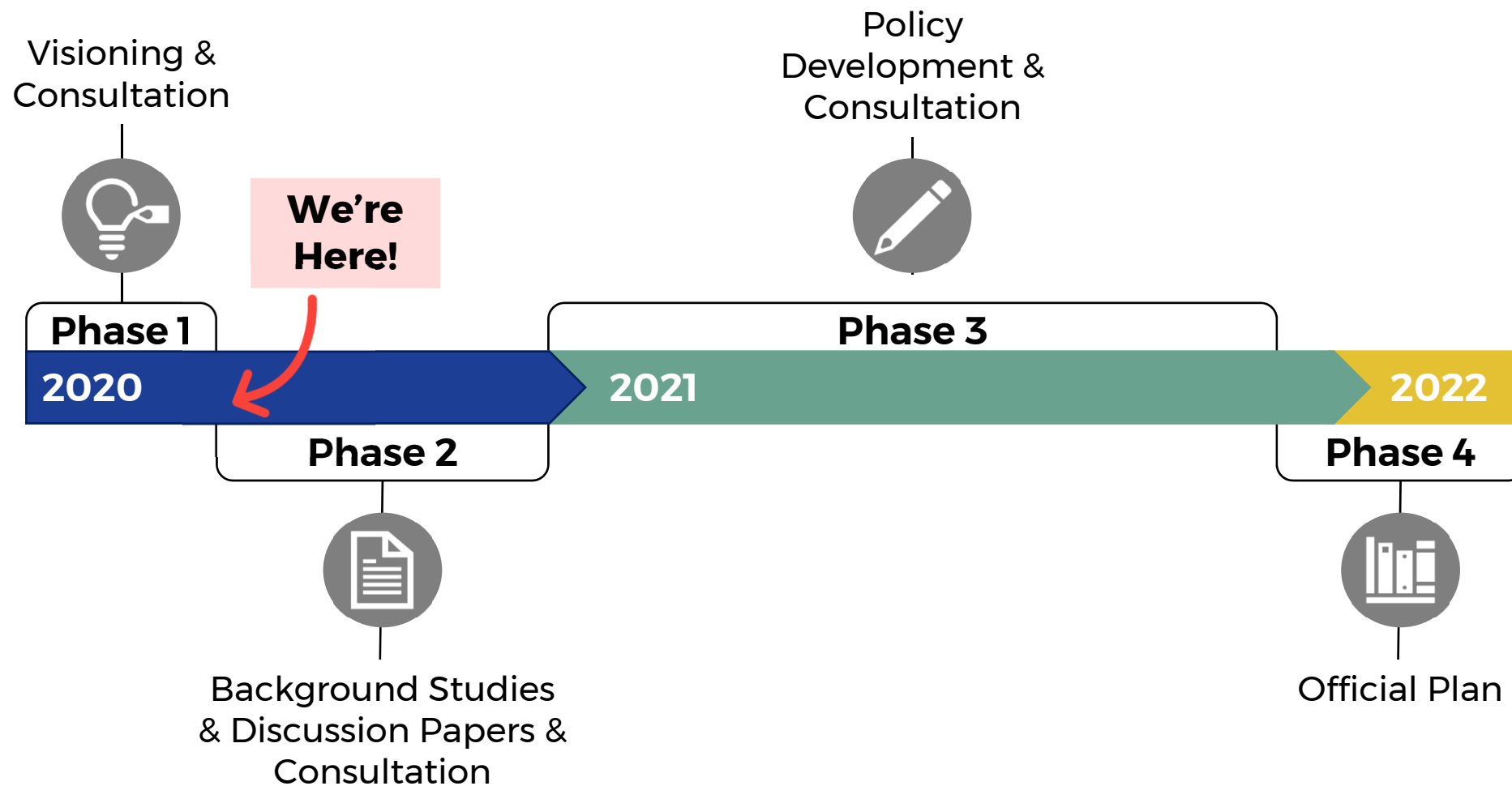


Why does the Town need a New Official Plan?

- The current Official Plan was adopted in 1980, and the last comprehensive update was in 2004
- Required under the *Planning Act*
- Required to conform with Provincial Plans and York Region's Official Plan
- The Town's population is growing and changing
- The Town needs to manage growth and development over the long-term (25 years)
- Official Plan policies will inform and be informed by other Master Plans and planning studies



General Work Program



Public Engagement Principles



Respect & Inclusion

To be inclusive and respectful towards the citizens of Whitchurch-Stouffville



Transparent and Accountable

To be transparent and accountable through ongoing communication and reporting back on what was heard



Trust & Social Capital

To build trust and social capital in the Town by getting citizens involved in the long-term plan of their community



Active Listening

To actively listen to citizens in order to build a collaborative vision that represents the community's values

Who is participating in the Official Plan Review?

Public

Town Staff

Region

Conservation Authorities

Transportation Authorities

School Boards

Public Services

Community Groups

Indigenous Communities

Special Interest Groups



WHITCHURCH-STOUFFVILLE
YOUTH COUNCIL



Official Plan Current Context

19



Official Plan Settlement Areas

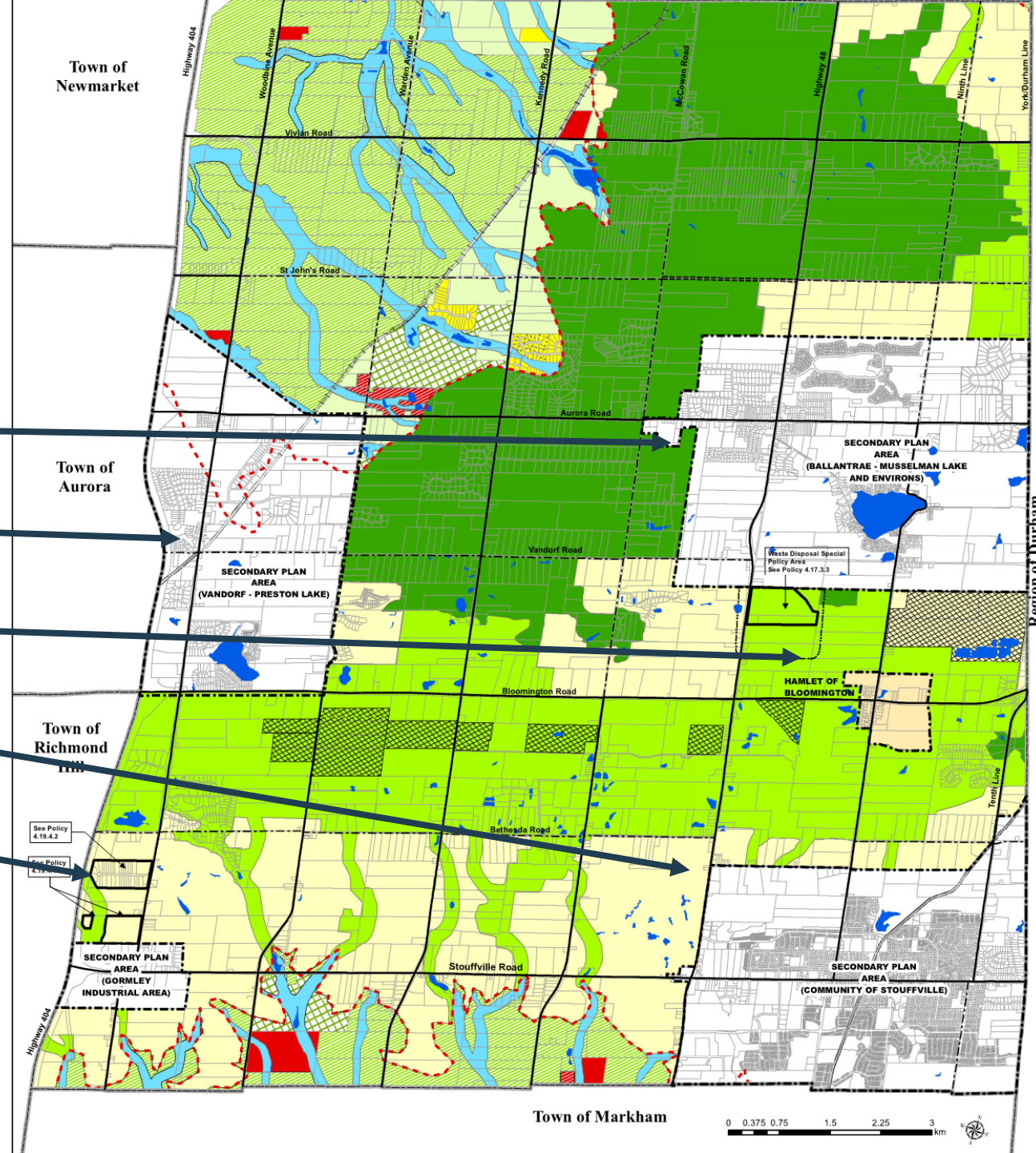
Ballantrae-
Musseman's Lake

Vandorf Preston Lake

Bloomington

Stouffville

Gormley Industrial
Area



Stouffville Settlement Area



Ballantrae-Musselman's Lake Settlement Area



Vandorf Preston Lake Settlement Area



Bloomington Settlement Area



Gormley Industrial Area and Neighbouring Settlement Areas

25

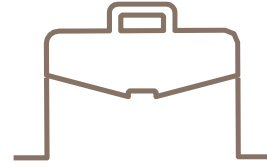


Focus Areas of the Official Plan Review

Visioning and Guiding Principles



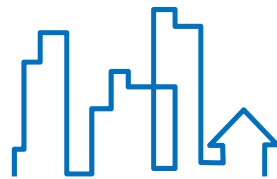
Planning for Growth



Planning for the Natural Environment



Planning for Complete Communities



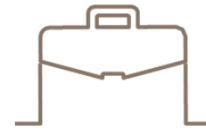
General Technical / Housekeeping Updates



What focus areas of the Town's Official Plan are you most interested in hearing about and participating in today?

1. Natural Environment & Agriculture
2. Growth (Housing, Employment)
3. Transportation, Transit & Trails
4. Public Health & Community Services
5. General Project Information

Planning for Growth



Visioning and Guiding Principles



Planning for the Natural Environment



Planning for Complete Communities



General Technical / Housekeeping Updates



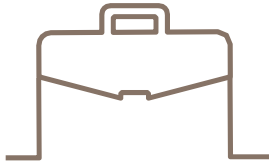
Visioning and Guiding Principles



- Ensure the Town's Official Plan reflects the community's vision for managing growth and change



Planning for Growth



- Ensure the Town's Official Plan accommodates for population and employment forecasts and a mix of land uses



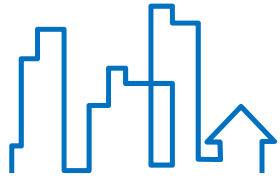
Planning for the Natural Environment



- Ensure the Town's Official Plan works to protect and enhance natural features and resources



Planning for Complete Communities



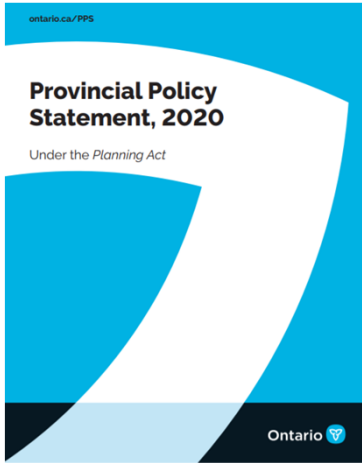
- Ensure the Town's Official Plan meets the community's housing needs, mix of housing types, and affordable housing



General Technical / Housekeeping Updates



- Ensure the Town's Official Plan is up-to-date with relevant Provincial and Regional policy

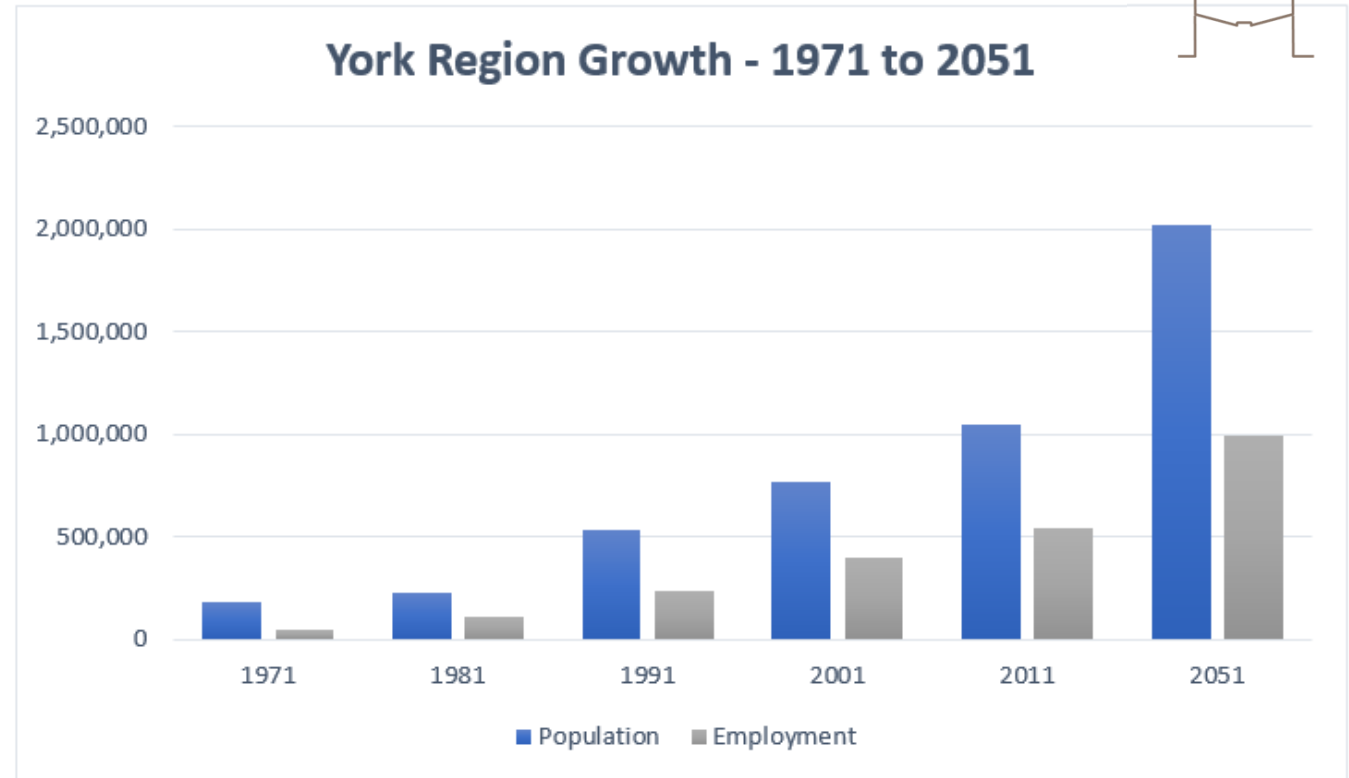


Official Plan Future Context

Population and Employment Projections



- The Provincial Growth Plan (2019) establishes how municipalities will grow
- The Growth Plan is implemented through the Region's Official Plan and is allocated to local municipalities
- York Region started a Municipal Comprehensive Review of their Official Plan in 2017 and is ongoing.
 - The Province (Amendment No. 1 to the Growth Plan, 2019) is now updating growth forecasts and extending the planning horizon to 2051



Projections are based on Schedule 3 of the Growth Plan

York Region has projected a population of 2.02 million people and 990,000 jobs by 2051.

A large share of this growth to be directed to existing built up areas.

Go to www.menti.com and use the code 72 38 36 8



The 2016 Census recorded a Town population of 45,837 people. Tell us if you agree or disagree with statements below about the Town since 2016.

Statement	Strongly Disagree → Strongly Agree									
a) Settlement areas in the Town have changed significantly since 2016	1	2	3	4	5	6	7	8	9	10
b) More can be done to develop / improve the Town's settlement areas	1	2	3	4	5	6	7	8	9	10
c) I have not noticed any change in the Town's settlement area since 2016	1	2	3	4	5	6	7	8	9	10





When thinking about future development, please rank your top priorities in terms of what you would like to see in the Town:

- Mobility options – trails, walkable neighbourhoods & transit
- Infrastructure – providing adequate water, wastewater, roads, highways and utility services
- Mixed affordable housing – provide a mix of housing types
- Employment areas – providing enough land for a mix of employment opportunities
- Density/Design – suitable intensification (mix of uses and density)
- Preserving the natural environment
- Other



Go to www.menti.com and use the code 72 38 36 8

If you selected "other" please describe your other priorities here:

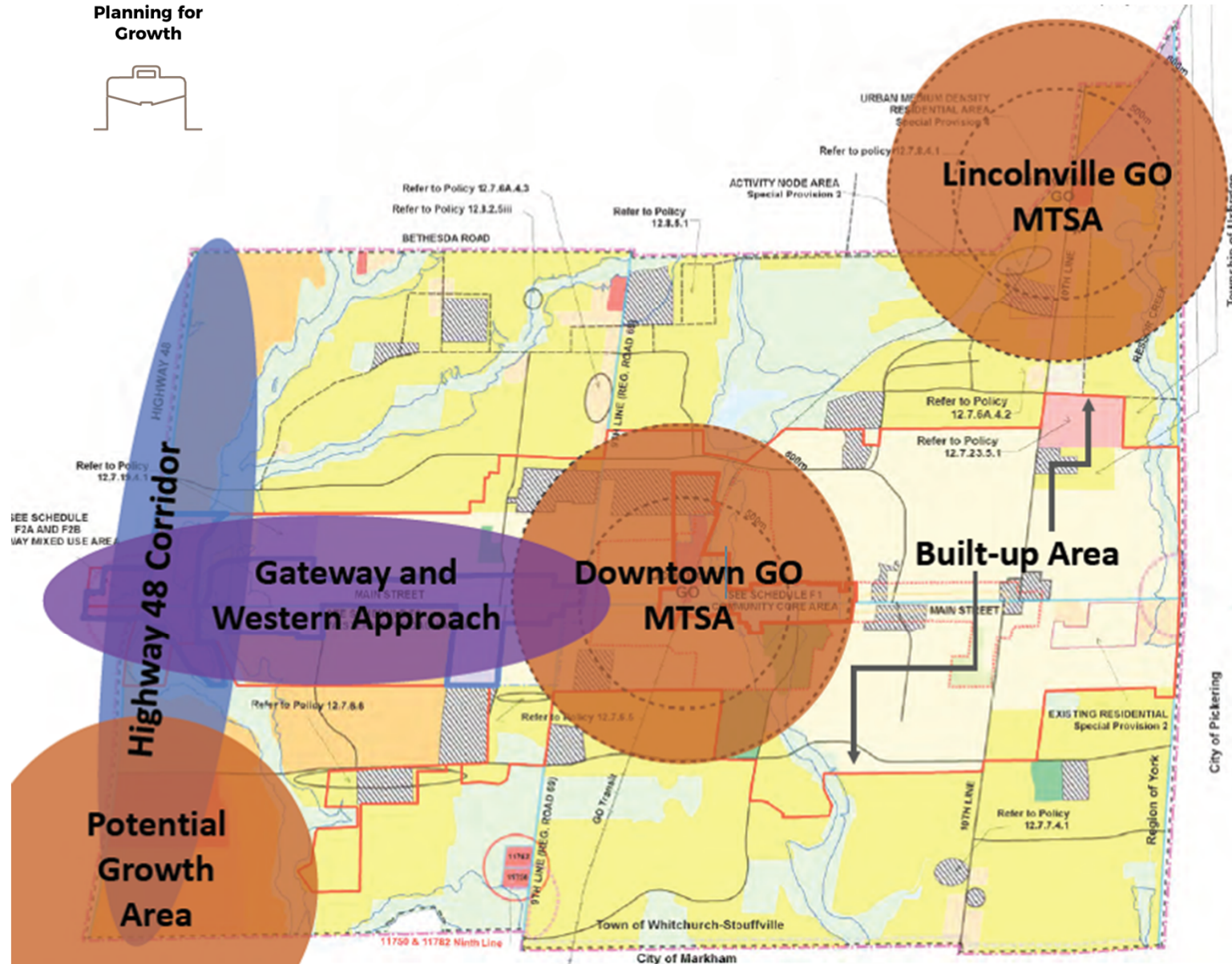
Future Growth

Planning for Growth



Strategic growth areas:

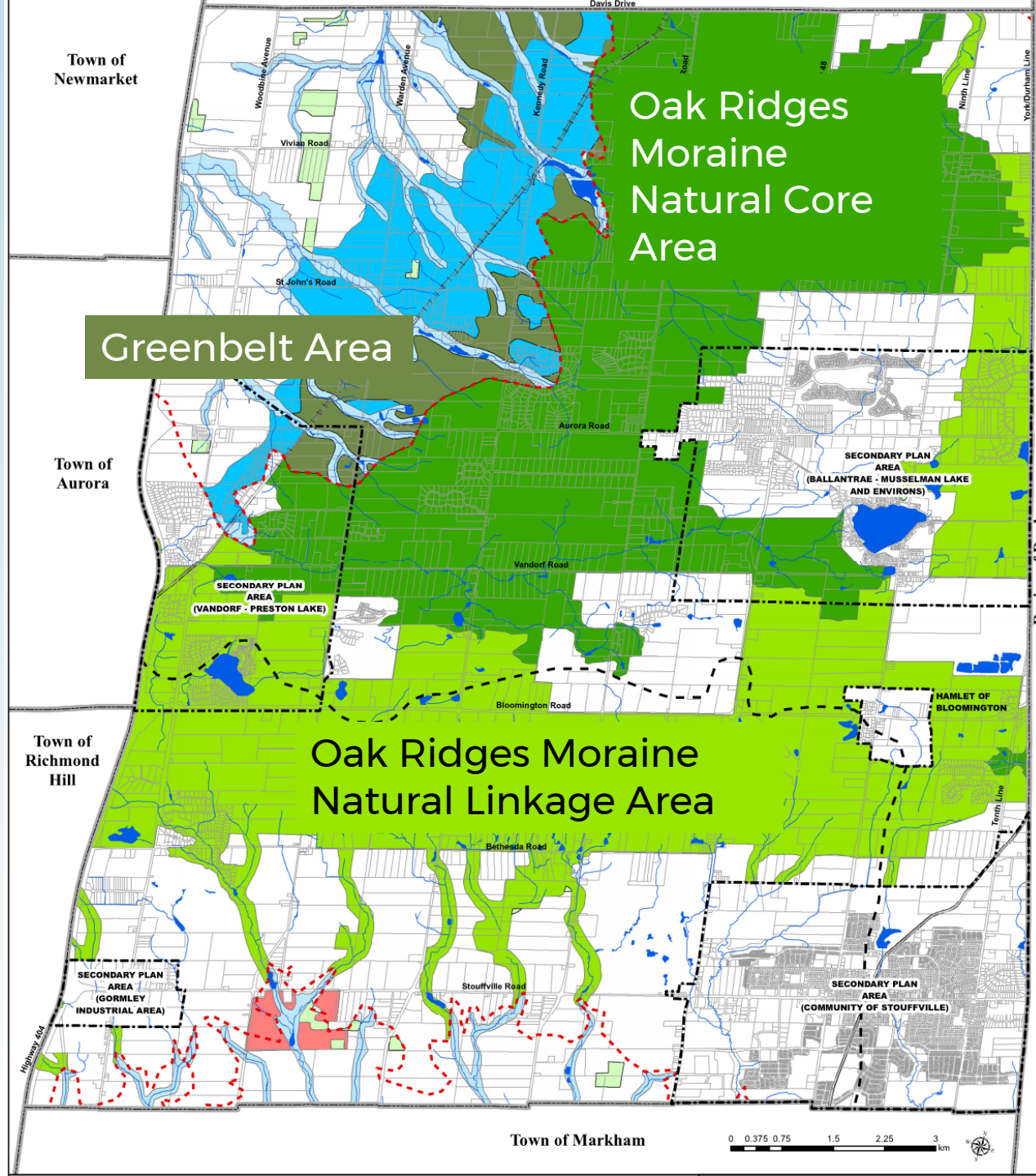
- High-order transit such as the Downtown GO and Lincolnville GO Major Transit Station Areas
- Highway 48 Corridor
- Gateway and Western Approach areas





Natural Environment

- Environmental sustainability is considered a major factor in the future planning of the Town
- As municipality's grow, it can have significant impacts on the natural environment





Go to www.menti.com and use the code 72 38 36 8

Over the next 25 years, what top three (3) goals should the Town focus on with respect to the Natural Environment?

- Create more parks, trails and plant trees
- Reduce emissions and improve the Town's corporate response to climate change
- Create/protect wetlands, watercourses and water quality
- Protect wildlife habitat and natural areas
- Other



Go to www.menti.com and use the code 72 38 36 8

If you selected "other" please describe your top priority for the natural environment here:

Building Complete Communities



Complete Communities: *places where homes, jobs, schools, community services, parks and recreation facilities are easily accessible. Complete communities support quality of life and human health (MMAH).*

Complete communities have the following characteristics:

- Access to healthy local food
- A sense of place, culture, arts
- Active Transportation opportunities (walking, cycling)
- Efficient use of infrastructure
- Transit supportive
- A mix of housing types and affordable housing
- A range of employment opportunities
- Reduce green house gas emissions and address climate change



National Ballet School and mixed-use development in Toronto.



Market Commons multi-residential project in Burlington.



Compact urban form in Markham.



Bridge over Ganaraska River in Port Hope.

Source: Ministry of Municipal Affairs and Housing (MMAH)



What top three (3) characteristics contribute to your idea of a Complete Community?

- Access to local food
- Walkability
- Culture and cultural heritage
- Mix of uses and different housing options
- Connection to natural spaces
- Close to a major urban area
- Mixed employment uses and office space
- Community amenities such as daycare and healthcare
- Other



Go to www.menti.com and use the code 72 38 36 8

If you selected "other" please describe the characteristic of a complete community here: 

**Planning for
Complete
Communities**



Press ENTER to pause scroll

Updating the Town's Vision Statement





Current Town Official Plan Vision

“Whitchurch-Stouffville: Country Close to the City”

The Town of Whitchurch-Stouffville is a rural community that will preserve and enhance its quiet, calm, attractive environment for residents, visitors and future generations. It will be:

- A safe, healthy, friendly and intergenerational community;
- A community which focuses its development in the community of Stouffville and other settlement areas to preserve the resources of the rural/agricultural/ environmental area;
- An environmentally aware community with a strong greenlands system;
- A community which supports the continuation of all forms of agriculture and related uses as an important part of its rural heritage and a major economic contributor;
- A community which provides a wide range of public and private recreation and cultural opportunities; and,
- A community which protects its natural environment and its built cultural heritage.



Menti Word Cloud Activity:

Let's imagine what the Town should look like in 25 years. Please submit the first 3 words that come to mind when describing your idea future community.

Engagement Opportunities & Next Steps

How to participate in the Official Plan Review



1. Register on the project website **cometogetherws.ca/opr**



2. Complete the visioning survey (electronic and paper)



3. Participate in today's live poll meeting



4. Tell us more about the Town using the mapping tool



5. Contact the Town my email and sign-up for updates at:

opreview@townofws.ca

1. Visit the Town's Website

- Project Website
cometogetherws.ca/opr
- Learn more about the project, upcoming milestones and engagement opportunities
- Other Engagement tools such as:
 - *Mapping (Places Tool)*
 - *Survey*
 - *Polls*
 - *Q&A*

51



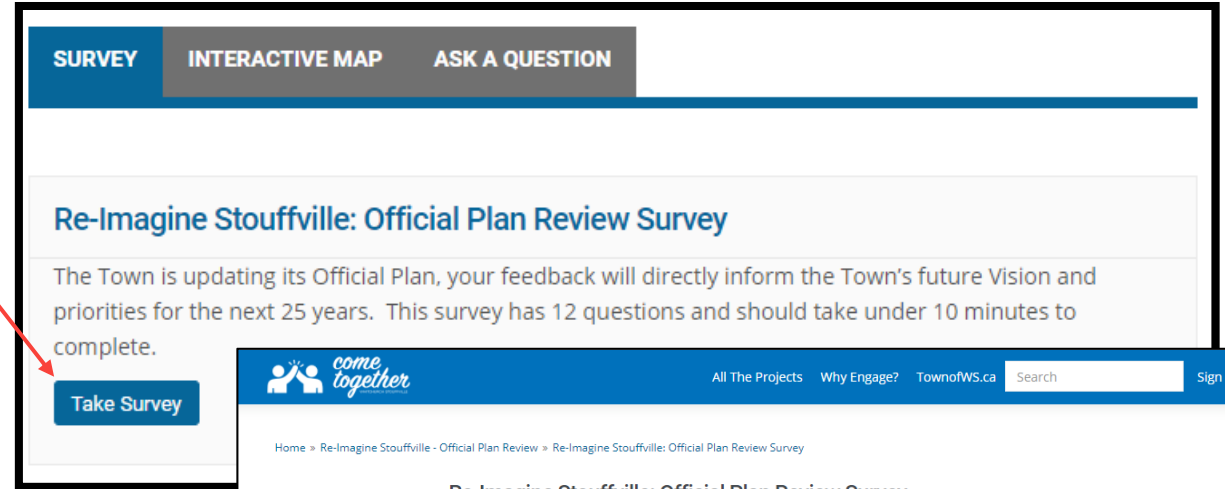
The screenshot shows the website for the 'Re-Imagine Stouffville - Official Plan Review'. The header includes the 'come together' logo, navigation links for 'All The Projects', 'Why Engage?', and 'TownofWS.ca', a search bar, and 'Sign In' and 'Register' buttons. The main content area features the title 'Re-Imagine Stouffville - Official Plan Review' with social media icons for Facebook, Twitter, LinkedIn, and Email. Below this is a section titled 'How Can We Re-Imagine Stouffville's Vision For The Future?' with a sub-header 'OFFICIAL PLAN REVIEW' and a house icon. The text explains that a vision is a community's goal for the future and that the official plan vision will help guide land use planning decisions and priorities for the next 20 years. It also states that this phase of the town's official plan review (OPR) will result in a vision statement and a set of guiding principles for the town's OP. A video player is embedded, showing a video titled 'Whitchurch-Stouffville Official Plan Review' from the Town of Whitchurch-Stouffville. The video player shows a play button, a progress bar at 03:35, and the Vimeo logo. On the right side of the page, there are three sections: 'Who's listening' featuring Meaghan Craven (Manager, Planning Policy) and Randall Roth (Senior Policy Planner); 'Key Dates' listing a public meeting on February 18, 2020, and a public open house on January 23, 2020; and 'Life Cycle' with two stages: 'Visioning and Consultation' and 'Background Studies and Discussion Papers'.

2. Please complete the Town's Survey

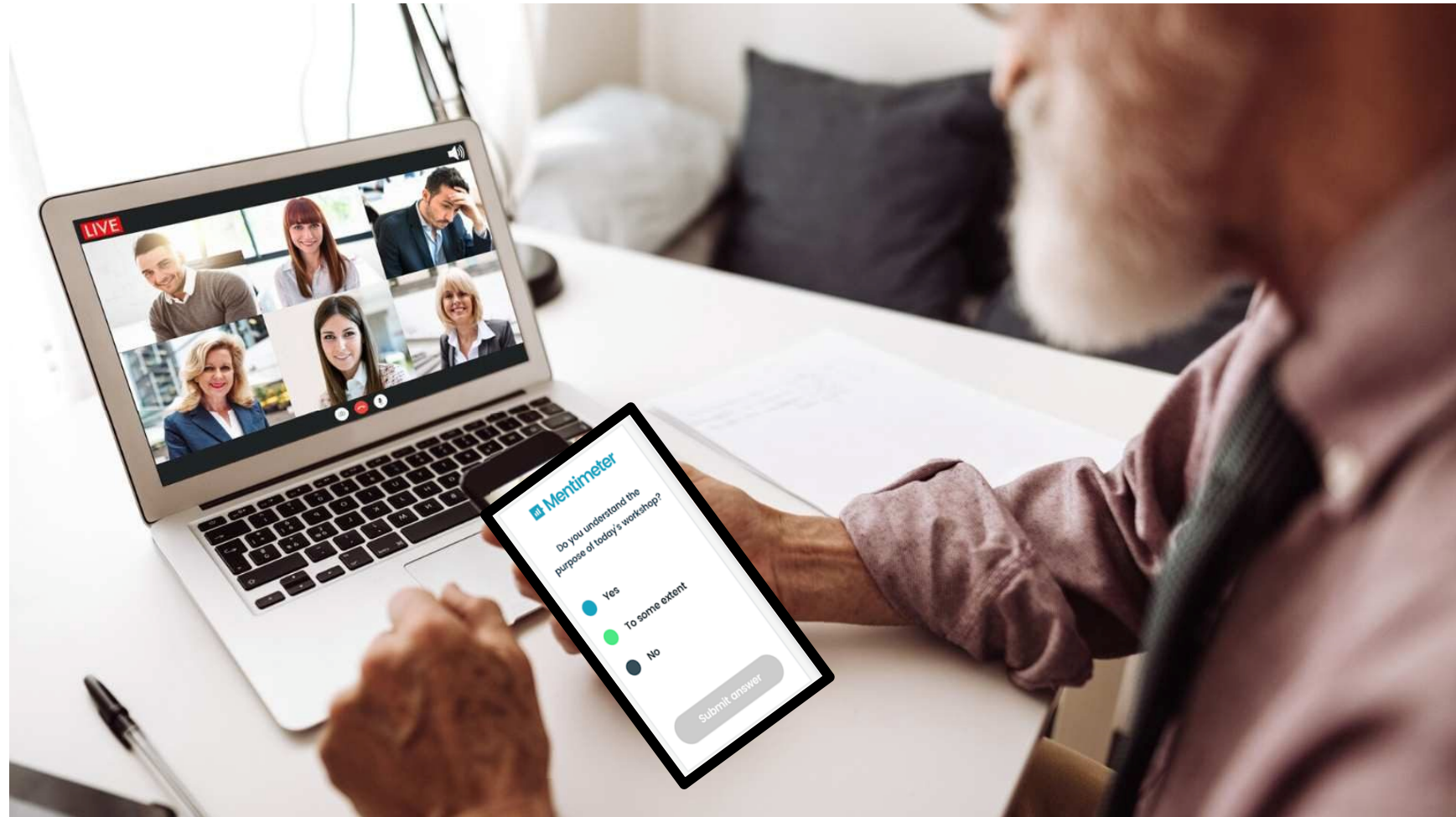
Online Survey at:
cometogetherws.ca/opr

Hard Copies are available at:

- *Leisure Centre;*
- *Town Hall; and,*
- *Whitchurch-Stouffville Museum*

A screenshot of the survey start page. The top navigation bar includes the 'come together' logo, 'All The Projects', 'Why Engage?', 'TownofWS.ca', a search bar, and 'Sign In Register' links. The breadcrumb trail reads 'Home > Re-Imagine Stouffville - Official Plan Review > Re-Imagine Stouffville: Official Plan Review Survey'. The main heading is 'Re-Imagine Stouffville: Official Plan Review Survey'. Below this, a paragraph repeats the information about the survey's purpose and duration. A progress bar shows 'Survey starts' on the left and 'Finish' on the right. A note states 'All fields marked with an asterisk (*) are required.' The first question is '1. What is your postal code?' with a dropdown menu. The second question is '2. How did you hear of the Official Plan Review?' with radio button options: 'Social media', '"On the Road in Whitchurch-Stouffville" magazine', 'Newsletter', 'Newspaper', and 'Mail'. A circular icon with a checklist symbol is in the bottom right corner.

3. Participate in Live Meetings



53



wsp

4. Tell us more about your Town using online Mapping

The Places tool is an interactive map that gathers feedback and photos

Visit:

cometogetherws.ca/opr
for more details.

54



The screenshot shows a web interface for a survey titled "What Does Stouffville's Future Mean to You?". At the top, there are three tabs: "SURVEY", "INTERACTIVE MAP" (which is selected), and "ASK A QUESTION". Below the tabs, there are social media icons for Facebook, Twitter, LinkedIn, and Email. The main content area features a map of Stouffville with three yellow location pins. The map includes labels for "Ballantr", "Goodwood", "CONCESSION RD 2", "CONCESSION RD 3", "CONCESSION RD 4", "WEBB RD", "EMERALD HILLS GOLF COURSE", "HIGHWAY 48", "9TH LINE", and "30". Below the map, there is a text prompt: "What is your vision for the future of Whitchurch-Stouffville? Tell us by selecting one or more of the options below and add a photo or a comment." This is followed by another prompt: "What you would like to see as a priority for the future? You can drop pins on this map regarding any or all of the following topics:". A list of topics follows: Housing, Transportation, Culture, Environment, Community Services and Health, Agriculture, Business, and Other - did we miss anything? What else do you love, or want to change?. Below the list is a section titled "How to Drop a Pin?" with a bullet point: "Zoom into the area you would like to place a pin by using the + or...". A "Continue reading" link is provided. At the bottom right, there is a blue button labeled "Go to Map".

5. Contact the Town Directly

Contact:

Meaghan Craven. Manager, Planning Policy
(905) 640-1910 ext. 2359



Randall Roth, Senior Policy Planner
(905) 640-1910 ext. 2260



Or Email:

opreview@townofws.ca

Next Steps

- Feedback from this meeting will be used to prepare a **Visioning Report**
 - *The Town will report back on what was heard and continue online engagement (www.cometogetherws.ca/opr)*
- Report to Council on **October 20th** with an update on the Project
- **Future Public Meetings** will be held to collect feedback on Discussion Papers detailing each of the OPR Focus Areas presented here today
- The Town continues to work with York Region on **Growth Management and Land Needs Assessment**
 - *This is contingent on York Region's timing and looks at allocation of population growth to 2051*

Key Engagement Opportunities

Phase 1



Visioning and Consultation

- Communications Plan
- Introductory Project Committee Meetings
- Public Event/Online Meeting
- Community Visioning Workshop

Phase 2



Background Studies and Discussion Papers

- Project Committee Meetings
- Second Public Event/Online Meeting and Council Meeting

Phase 3



Policy Development

- Feedback from Project Committees on Policy Direction Reports
- Third Public Event/Online Meeting and Council presentation

Phase 4



Official Plan

- Feedback from Project Committees on Final Official Plan
- Final Public Event/Online Meeting and Public Meeting
- Council Adoption

Question Period

58



*Please submit a question in the **Chat Function***



Thank you !

Visit:

cometogetherws.ca/opr

for more details.