



ACC

ARCHAEOLOGICAL
CONSULTANTS CANADA

Stage 1 & 2 Archaeological Assessment

Proposed Development

15374 Woodbine Avenue, Part of Lots 21 & 22, Concession 3, Township of
Whitchurch, Town of Whitchurch-Stouffville, Regional Municipality of York,
Ontario

Supplementary Documentation

Prepared for:

Ontario Ministry of Heritage, Sport, Tourism and Culture Industries

Prepared by:

Archaeological Licensee: Matthew Muttart, M. A., P1208
Archaeological Consultants Canada
785 Mohawk Road East
Hamilton, ON L8T 2R4

PIF# P1208-0139-2022 (Stage 1)
PIF# P1208-0150-2022 (Stage 2)
Project No. 257-01-22263-02-22
14 November 2022

TABLE OF CONTENTS

1.0 GPS COORDINATES FOR ARCHAEOLOGICAL LOCATIONS

2.0 ARCHAEOLOGICAL LOCATION MAPPING

LIST OF FIGURES

SD 1: Aerial Photograph Showing the Location of Archaeological Resources Identified during the Stage 1 & 2 Archaeological Assessment



ACC
ARCHAEOLOGICAL
CONSULTANTS CANADA

Project No. 257-01-22 &
233-03-22
Supplementary Documentation

1.0 GPS COORDINATES FOR ARCHAEOLOGICAL LOCATIONS

Archaeological locations were recorded using a Global Positioning System (Garmin Etrex 10) with an accuracy of better than 3 m. There were no conditions that affected the accuracy of the readings. A coordinate reading was taken for the positive test pit and for the surface artifact findspot. The position of two fixed reference landmarks were also recorded. The site is located within Universal Transverse Mercator Zone 17. North American Datum 1983 was used. No method of correction was used.

Table 1: GPS Coordinates for Site AjGv-550

-550 READING	GPS COORDINATES			
	ARTIFACT	EASTING	NORTHING	ELEVATION (Metres)
Location 1 (Test Pit 1)	flake	628448.75	4875482.83	296
Location 2 (CSP 1)	ironstone	627973.34	4875273.91	306
FIXED REFERENCE LANDMARKS				
READING	GPS COORDINATES			
	EASTING	NORTHING	ELEVATION (Metres)	
property bar, northeast corner	628489.53	4875516.63	292	
property bar, southeast corner	628521.98	4875330.69	297	

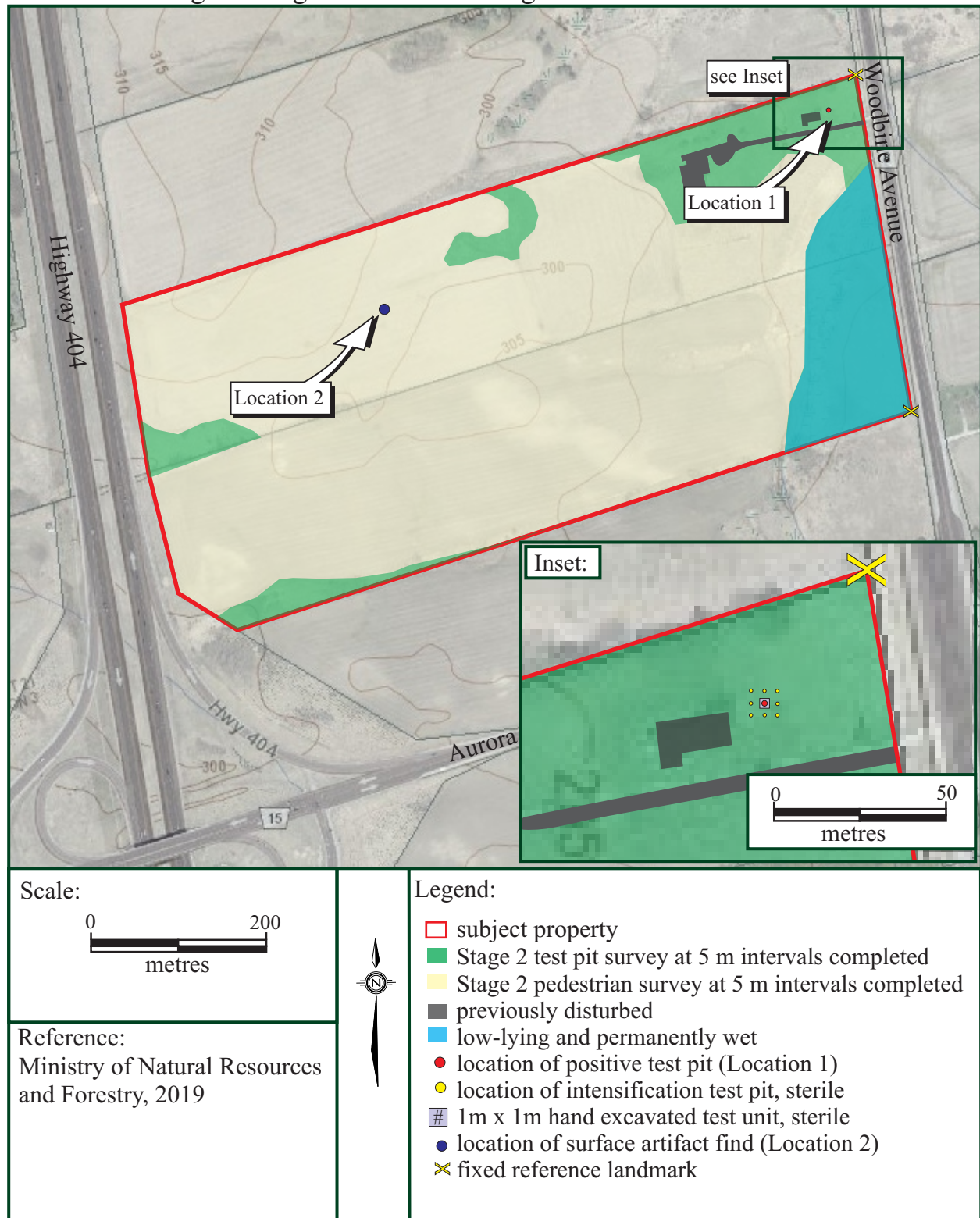


2.0 ARCHAEOLOGICAL LOCATION MAPPING

The following figure shows the locations the archaeological resources identified during the Stage 1 & 2 assessment as well as the fixed reference landmarks within the subject property.



Figure SD 1: Aerial Photograph Showing the Location of Archaeological Resources Identified during the Stage 1 & 2 Archaeological Assessment



ACC

ARCHAEOLOGICAL
CONSULTANTS CANADA